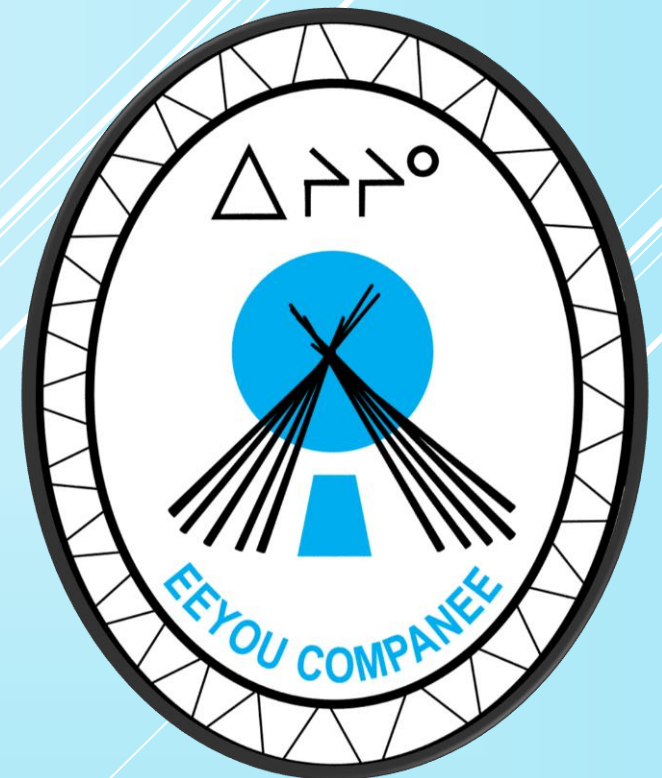


JAMES BAY EYYOU CORPORATION MITIGATING WORKS (SOTRAC) FUND

***“Working Together to Guarantee the Next
Generation of Land User’s”***

November 14-15, 2018

Chisasibi, Qc



INTRODUCTION

- The Mitigating Works (SOTRAC) Fund is one of the three funds established under the La Grande (1986) Agreement to compensate the Crees for the effects of certain changes that Hydro-Quebec wished to make to the technical description of the 1975 La Grande Complex.
- The fund is to be used for the purpose of carrying out remedial works and programs for the benefit of any Cree or a Cree community or for any mitigating measures approved by James Bay Eeyou Corporation.
- James Bay Eeyou Corporation is responsible for the control, management and administration of the Fund.
- The Fund adopts and expands on the “SOTRAC” concept, established under chapter 8 of the 1975 JBNQA, in order to deal with remedial measures to offset future unknown impacts of the 1975 La Grande Complex as it affects the Cree way of life.

INTRODUCTION

- The fund originally consisted of compensation in the amount of \$15,006,600 paid by Hydro-Quebec to James Bay Eeyou Corporation in 1987
- To this compensation was added the balance of the compensation held by the La Grande Remedial Works Corporation (“SOTRAC” in French), which was folded into James Bay Eeyou Corporation in 1987
- Under its enabling legislation, James Bay Eeyou Corporation became Sotrac’s successor. As such, James Bay Eeyou Corporation assumed Sotrac’s powers and obligations and acquired its assets and liabilities.
- The balance of the Sotrac compensation that was transferred to James Bay Eeyou Corporation in 1987 amounted to \$15,908,132.

INTRODUCTION

- The total compensation received by the Mitigating Works Fund in 1987 therefore totalled **\$30,914,732**.
- Under the Investment Policy governing the management of the compensation, the capital of the Fund is to be preserved.
- The income generated from the investment of the capital is allocated to the Cree communities according to a formula established by the Cree Inter-Band Treaty and the by-laws of James Bay Eeyou Corporation.
- As a result of the responsible investments made by James Bay Eeyou Corporation over the years, the capital of the Fund had a market value of \$45,740,325 as at March 2018, in addition to the cost of remedial measures projects incurred since 1987 (\$50,340,148 to date).

OBJECTIVES

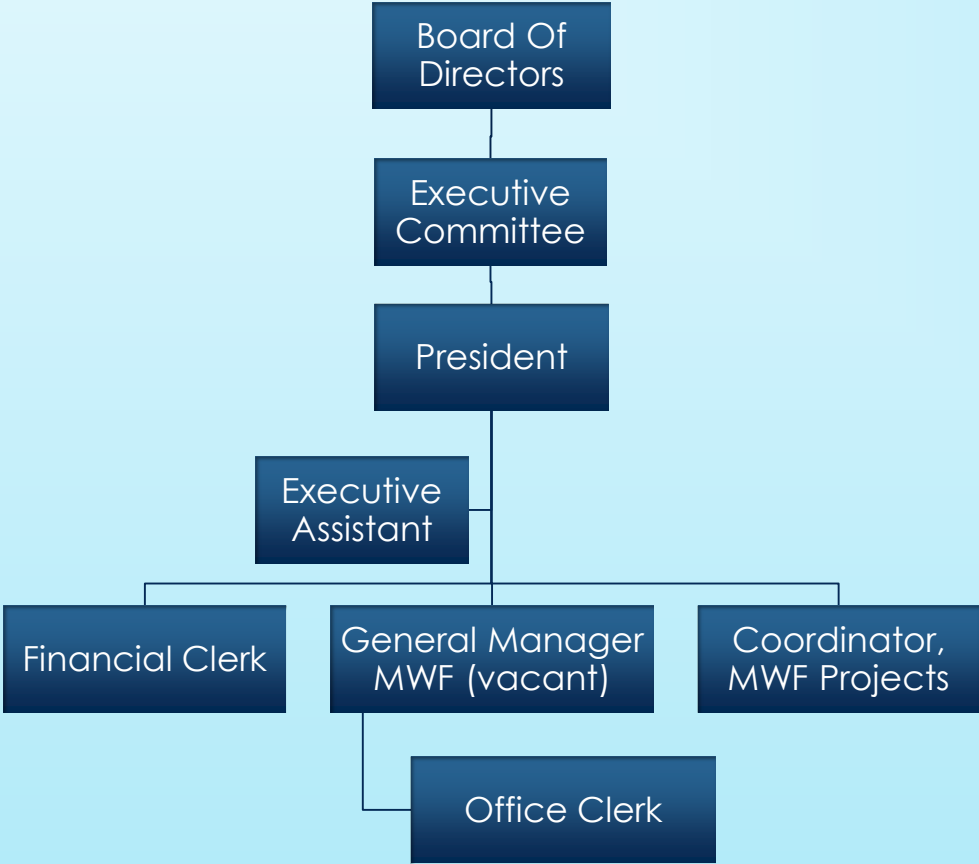
- To study, plan, design and carry out remedial measures and programs;
- To implement proposals for the Cree hunters and trappers;
- To administer measures to mitigate the unknown impacts of the 1975 La Grande Complex as it affects the Cree traditional way of life;
- To assist the communities in preserving the traditional hunting, fishing and trapping way of life;
- To assist in promoting the cultural values and traditions of the James Bay Cree;
- To carry out remedial works and programs such as those described in [Schedule 4 of Section 8](#) of the JBNQA for the benefit of any Cree or Cree community;
- In addition, the fund may be used for any mitigating measures approved by the Board of Directors of James Bay Eeyou Corporation.

MANAGEMENT AND ADMINISTRATION

- James Bay Eeyou Corporation is controlled by a Board of Directors composed of the nine (9) elected Chiefs and one (1) local representative from each community, plus four (4) Hydro-Quebec representatives and two (2) representatives from GCCQ/CRA composed of the Chairman and Vice Chairman for a total of twenty-four (24) members.

MANAGEMENT AND ADMINISTRATION

Organization Structure



ALLOCATION OF FUND

- The administrative expenses of James Bay Eeyou Corporation are paid by the three funds in the proportion that each fund bears to the total compensation.
- The nine (9) Cree communities who were the signatories to the La Grande Agreement entered into a Cree Inter-Band Treaty on November 6, 1986 in order to provide for the allocation of the income generated by the compensation pending a decision as to the final allocation of the capital;
- In 1995, agreement reached, with the exception of Eastmain, as to the final allocation of the capital and the income generated by the capital;
- The allocation is based on the following formula:
 - **Population** – twenty-five percent (25%) of the compensation is allocated among the nine Cree communities based upon the total membership of each community residing in the community expressed as a percentage of the total number of Cree beneficiaries residing in the territory.

ALLOCATION OF FUND

- **Impact** – seventy-five percent (75%) of the compensation is allocated based on the impacts of the La Grande Project on each community i.e.: flooding of traplines, transmission lines and Hydro Quebec infrastructures such as powerhouses, residences, roads etc.
- It was agreed to apportion the impacts as follows:

Chisasibi	40%
Wemindji	15%
Eastmain	20%
Waskaganish	3%
Nemaska	7%
Waswanipi	5%
Mistissini	7%
Ouje-Bougoumou	3%
Whapmagoostui	\$50,000.00

TYPES OF PROJECTS SUBMITTED

- **Campsite**
 - Clearing
 - Flyways
 - Goose pond
 - Land Levelling
 - Clean-up of site and riverbanks
 - Parking Area and Access Road
- **Cabin**
 - Construction
 - Maintenance & Repairs
 - Improvements
 - Demolition
 - Material
 - Shed Construction
- **Programs**
 - Cabin Insurance
 - Beaver Inventory
 - Summer Student
 - Traditional Tent Making
 - Young Trappers
 - New ISP Member
 - Airlift

TYPES OF PROJECTS SUBMITTED

- **Subsidies**
 - Fuel
 - Gas
 - Equipment
 - Transportation
 - Ski-doo's
- **Transportation**
 - Float Plane
 - Helicopter
 - Ground
- **Other**
 - Air Strips
 - ATV Repairs
 - Bridge Repairs
 - Caribou Hunt Expedition
 - Local Harvesting Coordinator
 - Delivery of Material

MWF DISBURSEMENTS

MITIGATING WORKS FUND DISBURSEMENTS TO COMMUNITIES					
Year	MWF	Cree Trappers	Year	MWF	Cree Trappers
1988	2,677,524	-	2003	930,645	100,000
1989	1,998,512	-	2004	560,724	100,000
1990	2,757,808	-	2005	1,069,001	100,000
1991	3,413,388	2,500	2006	476,895	100,000
1992	1,752,506	265,240	2007	645,328	100,000
1993	3,009,740	139,029	2008	692,473	100,000
1994	2,933,576	184,836	2009	823,183	100,000
1995	2,018,048	185,000	2010	604,964	100,000
1996	2,729,819	184,306	2011	608,589	100,000
1997	2,787,913	185,000	2012	609,105	100,000
1998	1,788,239	-	2013	552,356	100,000
1999	2,685,960	101,000	2014	798,231	100,000
2000	2,334,271	-	2015	876,867	100,000
2001	1,249,994	110,000	2016	960,197	100,000
2002	1,028,972	100,000	2017	1,024,882	-
			2018	1,033,527	-
TOTAL DISBURSEMENTS				47,433,237	2,906,911
TOTAL FUNDS DISBURSED				50,340,148	

FUND BALANCE

FUND BALANCE	
	<i>Mitigating Works Fund</i>
Funds received - 1986	15,006,600
Transfer from Sotrac (1986) Fund	15,908,132
MWF Balance – May 27, 1987	30,914,732
Total Funds Allocated (1988-2018)	50,340,158
MWF Balance - March 31, 2018	45,740,325

THANK YOU.