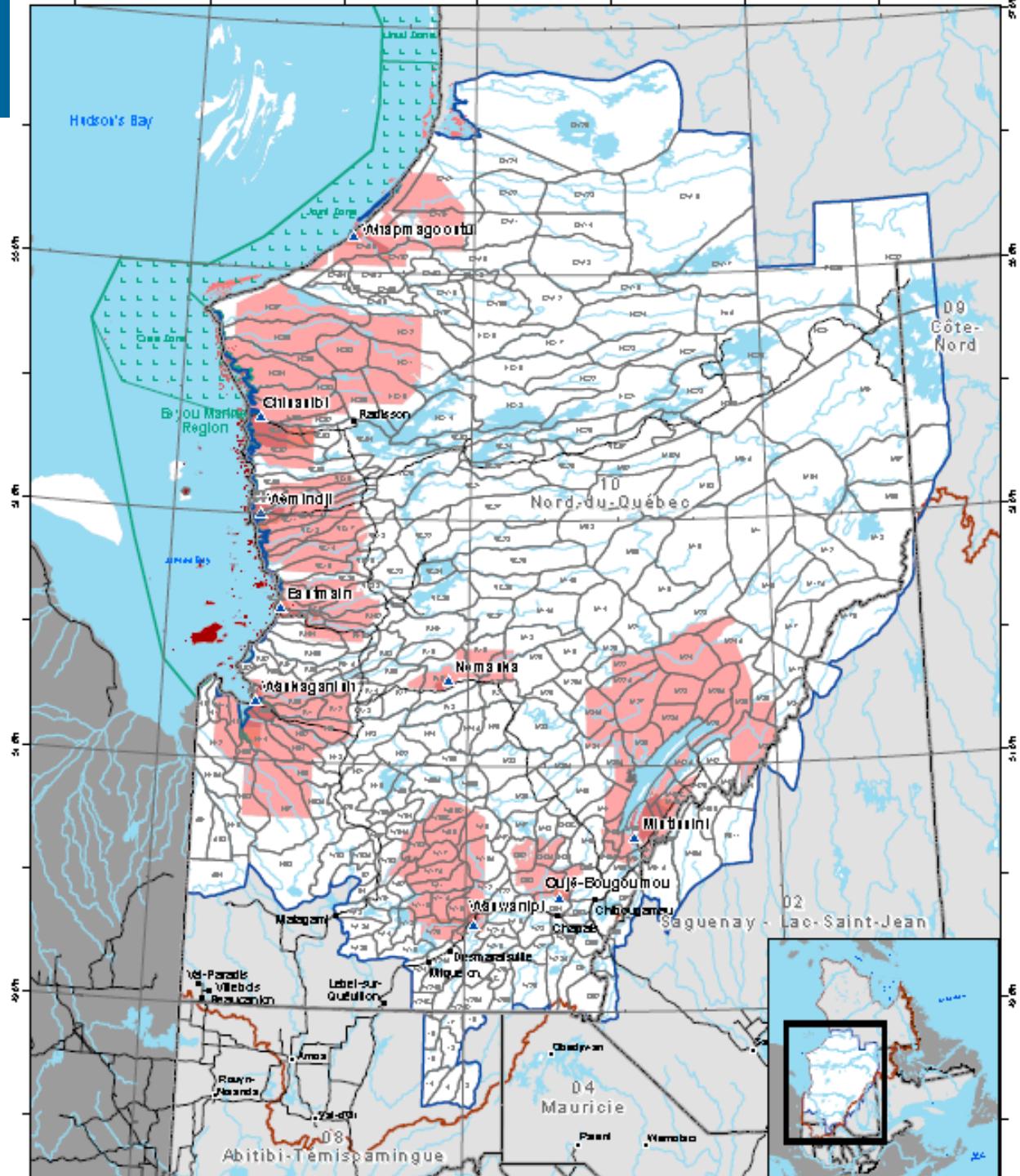




Working Together to Guarantee the Next Generation of Land Users

**Me Paul John Murdoch
Cree Quebec Negotiator for the
Cree Nation Government**



Introduction

The Cree history with mining has been relatively limited when you compare to other industries currently. All indications are that this will change.

Current

- Troilus Mine (Closed with Possible Re-Opening)
- Bachelor (More Exploration than actual Operation)
- Eleonore – Goldcorp
- Whabouchi - Nemaska Lithium
- Renard - Stornoway

Under development:

- Blackrock
- Osisko
- Galaxy
- Rose – Critical Elements

The Section 22 of the James Bay Northern Quebec Recognizes two phases in mining:

- Exploration – Exempt from social and environmental impact assessment. The ability to dictate relations between land users and companies is limited due to this exemption however the Cree Nation Mining Policy and entities like the Cree Mineral Exploration Board clearly demonstrate to companies that it is in their interest to establish positive or collaborative relations with land users.
- Operations – Require a social and environmental impact assessment. The Cree presence in this process is what motivates companies to negotiate: Impact Benefit Agreements, Collaboration Agreements or Socio-Economic Participation Agreements.

Negotiating Benefits for Land Users

- **There is not a standard Agreement or negotiations for any mine.**
 - Negotiating teams are composed of Community and Cree Nation Government representatives
 - The subjects that are addressed are: environment, social impacts (including land users), training and employment, contracts and business opportunities and financial benefit.
 - Differences in negotiations are attributable to: size of mine, number of communities affected, number of traplines affected, duration of mine, projected profitability of mine, company attitude

Management of Funds from Mining Agreements

Section 26.0.6 James Bay Northern Quebec Agreement

In furtherance of the powers of the Corporation and the other entities herein contemplated or afterwards created, and subject to the restrictions herein contained, the Compensation and the revenues therefrom may be used only for community purposes, other undertakings of general benefit to the Cree people, or may be set aside for and distributed to the individual Cree communities mentioned in the Agreement, to be used to benefit the said communities, and furthermore the Corporation and any other entities contemplated hereby or afterwards created shall not distribute their assets in any manner whatsoever to, or pay dividends or make gifts to, or otherwise benefit, any individual as distinct from the community.

Management of Funds from Mining Agreements

In accordance with the JBNQA funds are never paid directly to individuals, rather programs or projects are funded under the agreements:

- Directly by the company
- Through the establishment of a fund
- Through the community: Every community receives a "minimum participation payment" with potential revenue or profiting sharing. The communities are free to allocation these funds to their own community and social development priorities (i.e. land users). Once companies reach a certain level of profitability, the funds will be distributed to all Cree communities.

Conclusions

Because of the variation between Agreements and the discretion on the types of benefits that can be negotiated it is very difficult to get reporting or a global picture how funds and benefits are being managed.

Questions?