

# ABOUT LAND AND RESOURCE USE PLANNING

Why does land and resource use  
planning matter ?



It is an opportunity to voice  
your concerns and vision for  
your land;



It is an opportunity to build  
a common vision for the  
future of Eeyou Istchee



It can help in protecting the  
land, wildlife, and Eeyou  
Eetun



It can assist in developing  
a strong and sustainable  
Cree economy

To learn more about Land and  
Resource Use Planning, the process  
and the Plan, you can consult the  
section Land Use Planning of our  
Website:

**[eeyouplanningcommission.ca](http://eeyouplanningcommission.ca)**

## EEYOU PLANNING COMMISSION

### CONTACT US

 [epc@cngov.ca](mailto:epc@cngov.ca)

 [eeyouplanningcommission.ca](http://eeyouplanningcommission.ca)

 Eeyou Planning Commission

# EEYOU PLANNING COMMISSION



## ABOUT THE EPC

The Eeyou Planning Commission (EPC) was established by the Cree Nation Government in 2017.

It fulfills planning responsibilities stemming from the Agreement on Governance in the Eeyou Istchee James Bay Territory (Cree-Quebec Governance Agreement, 2012).

The EPC is composed of commissioners each appointed by one of the Cree communities and is chaired by the Deputy Grand Chief of the Cree Nation Government.

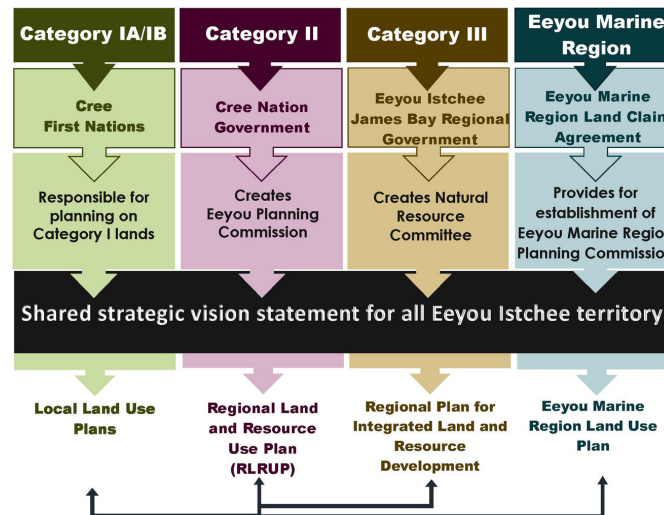
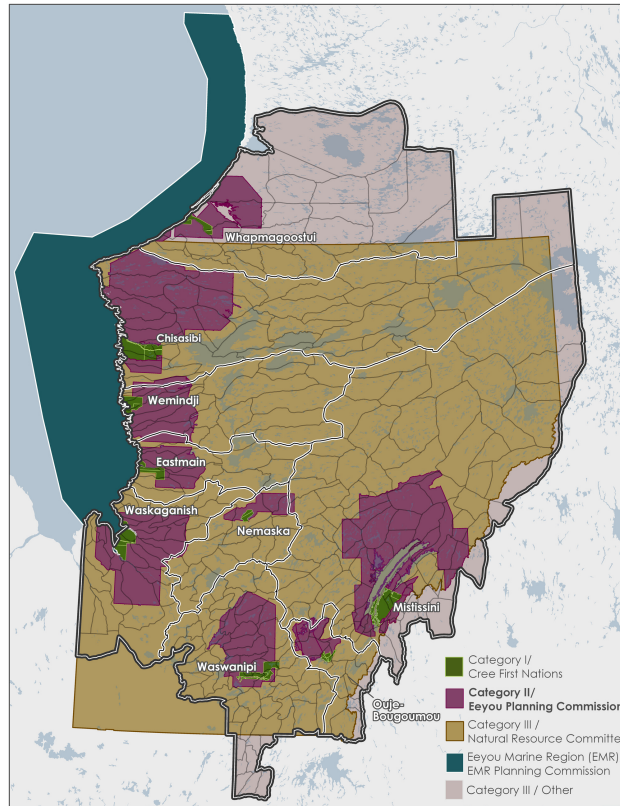
The Secretariat of the EPC, part of the Cree Nation Government, has offices in Waskaganish and Montreal.

## WHAT WE DO

Working toward building a **collective Cree** land and resource use **vision** for the whole of Eeyou Istchee.

The EPC is working collaboratively with regional planning partners in order to harmonize the various land use plans so that they reflect, as best as possible, the collective vision, interests and aspirations of the Crees.

## LAND AND RESOURCE USE PLANNING IN EYYOU ISTCHEE



## PLANNING RESPONSIBILITIES

The core responsibility of the EPC is the development of a Regional Land and Resource Use Plan (RLRUP) for Category II lands.

The RLRUP is intended to guide planning and decision-making on Category II lands, with respect to development and lands management.

**In the other areas of the region, the EPC will work collaboratively with the regional planning partners to share knowledge and resources and to ensure that the provisions of these other plans are harmonized.**

**This includes:**



Working with the **Cree First Nations**, which are responsible for planning in **Category I** lands.



Working with the **Natural Resource Committee (NRC)** of the Eeyou Istchee James Bay Regional Government (EIJBRG), which is responsible for planning in **Category III** lands.



Working with the **Eeyou Marine Region Planning Commission (EMRPC)**, which is responsible for planning in the offshore marine area.