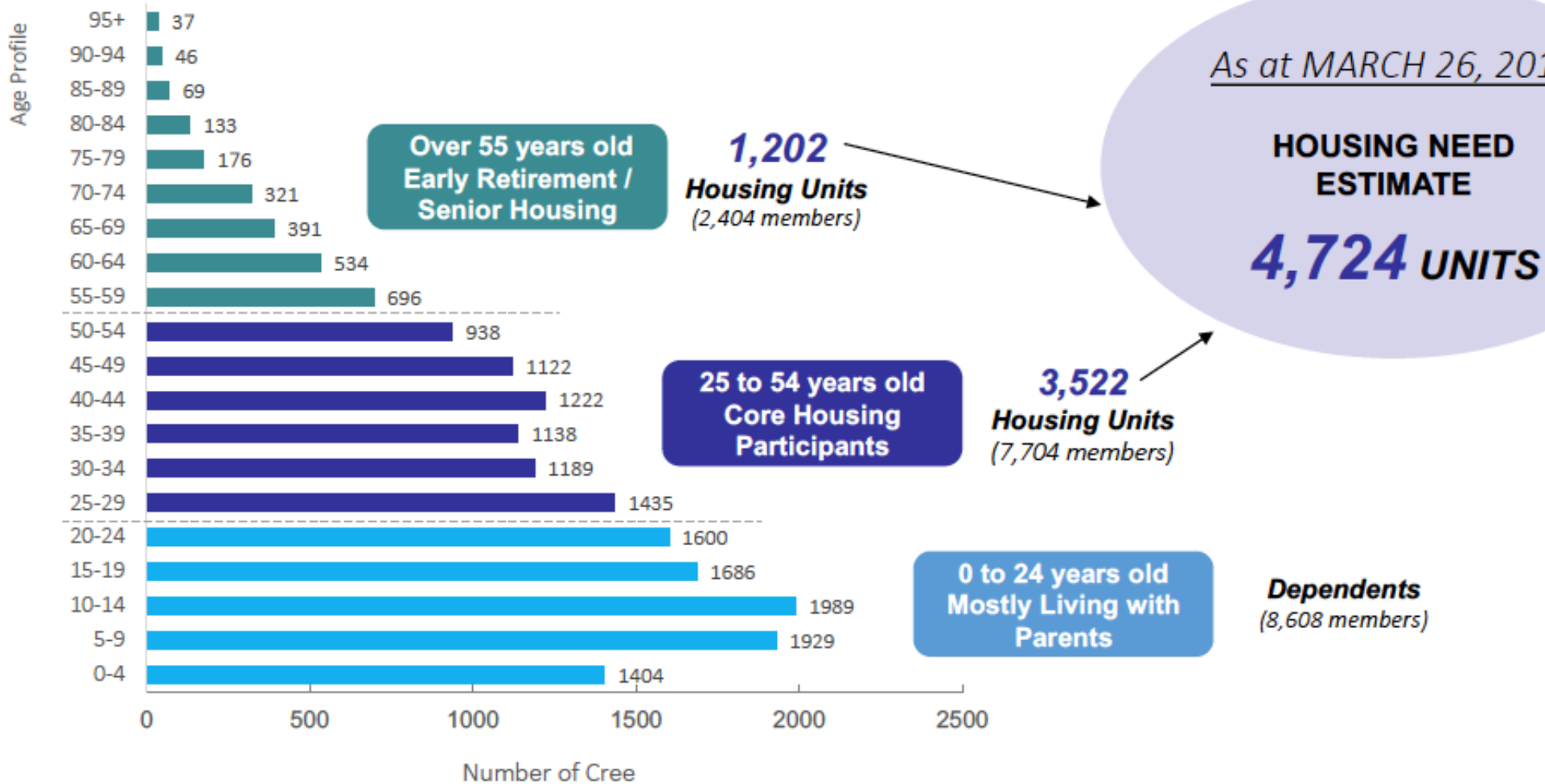


# Current Housing Needs



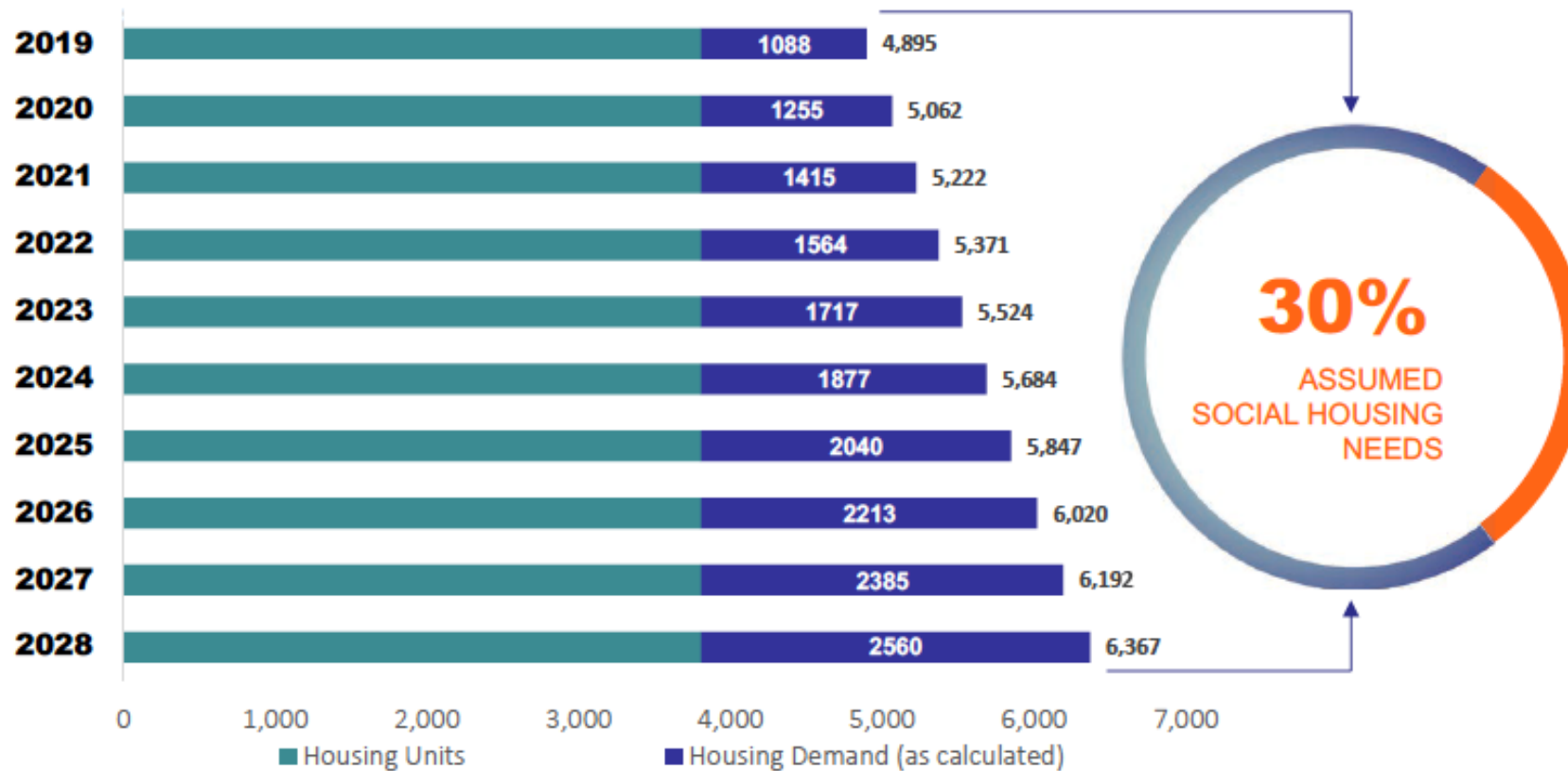
## Cree Residential Population



# Future Housing Needs



Cree Residential Housing Demand (In Units)



NOTES:

1. The 30% assumption for Social housing was provided by the Capital Works department of the Cree Nation Government
2. In-community population figures reflect those aged 25 and over and were extracted from MSSS as at March 26, 2018
3. All housing stock is based on the Cree inventory as at March 31, 2018
4. Current housing demand is calculated by taking the difference between half of the population (note 1) and the number of units on hand