

# Presentation to Cree First Nations



Working together for equity,  
justice and stronger communities.

# Our Mission

As part of the Cree Nation Government, the Department of Justice and Correctional Services was established in 2008 to provide for the implementation of Section 18 of the James Bay and Northern Quebec Agreement, and the Justice Agreement signed with the Government of Quebec on May 30, 2007.

Within these agreements, there is clear recognition of Cree usages, customs and ways of life, which remain an important part of our society and have been a part of our institutions for many generations.





## OUR FACILITIES IN EYYOU ISTCHEE



9

### JUSTICE FACILITIES

Each of the communities in Eeyou Istchee is home to a Justice Building where community members can find all of the services and help they need.

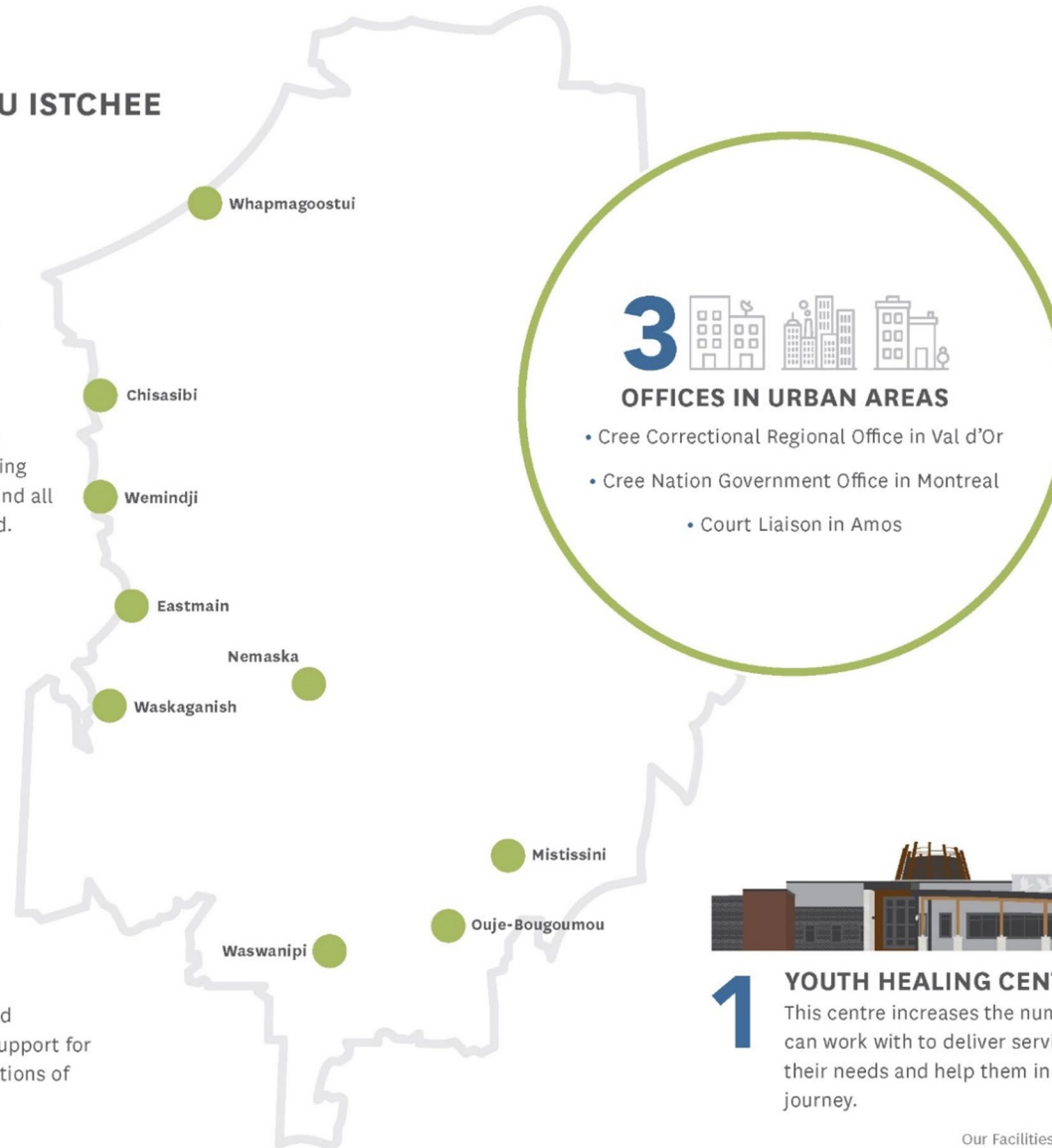


2

### WOMEN'S SHELTERS

Along with the Cree Board of Health, we have established a Women's Shelter in Waswanipi and Waskaganish that now provides support for women and their children in situations of domestic violence.

12 | 2020 Annual Report



3



### OFFICES IN URBAN AREAS

- Cree Correctional Regional Office in Val d'Or
- Cree Nation Government Office in Montreal
- Court Liaison in Amos

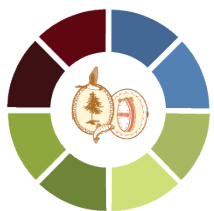


1

### YOUTH HEALING CENTRE

This centre increases the number of youth we can work with to deliver services adapted to their needs and help them in their healing journey.

Our Facilities in Eeyou Istchee | 13



## Partnerships

We are committed to working with various partners in order to continuously improve our services and improve the overall well-being of the Cree Nation. We understand by working with other organizations and entities, we will maximize our impact in the lives of people.



Canada

We also maintain an ongoing relationship with the Department of Justice of the Government of Canada to provide support for Community Justice Committees throughout Eeyou Istchee.



## Our Staff



The strength of a Nation is directly proportional to what we invest in our people, so we continue to build capacity in our employees regionally and locally to create a foundation of services and infrastructure in justice and corrections. Together, our staff and organizations can provide more comprehensive and inclusive support to Cree people coming into contact with the systems of justice and corrections.

Providing broader support is a group of

**22**  
**Regional Staff**

Which includes

- Director
- Coordinators
- Psychologist
- CAVAC Officers
- Administrators
- Native Parajudicial Workers
- Court Liaison Officers
- Specialists
- And other positions

Each Justice Building is home to core group of

**49**  
**Local Staff**

Which includes

- Receptionists
- Community Reintegration Officers
- Prevention Program Officers
- Community Justice Officers
- Primary Youth Workers
- Prevention Program Assistants

This year, we have also created

**7**  
**New Positions**

Which includes

- Translators
- Domestic Violence Liaison
- CAVAC Liaison Officer
- Fund Administrator
- Coordinator Strategic Management
- Coordinator of Knowledge Mobilization

All together, our department offers its services through our

**78**  
**Department Employees**



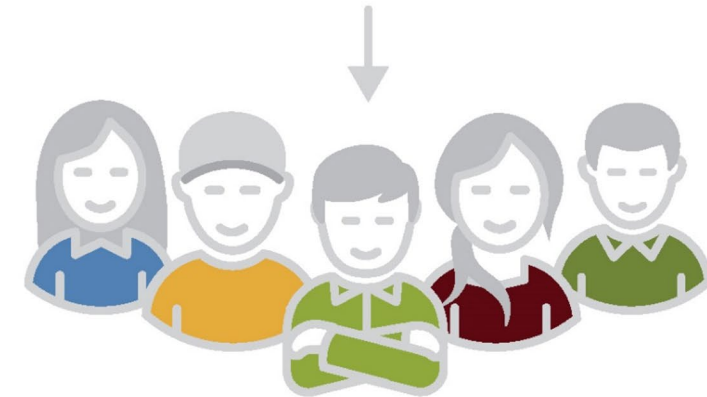
## Prevention Programs

One of the key elements of our prevention programs is the ability to engage with children and youth at an early stage. The prevention program also works with adults and provides a number of ways to engage and support them throughout their self-examination of choices. We believe that as a part of a community wishing to be safer and stronger, we need to do our part.

### Our Cree Youth



We **work together** with a variety of partners and run a range of prevention programs in **schools** and in the **communities**.



It is through these **programs** we can **engage, teach, coach** or **mentor** a youth at risk of being on an unhealthy path in their life.



Child Development  
Institute

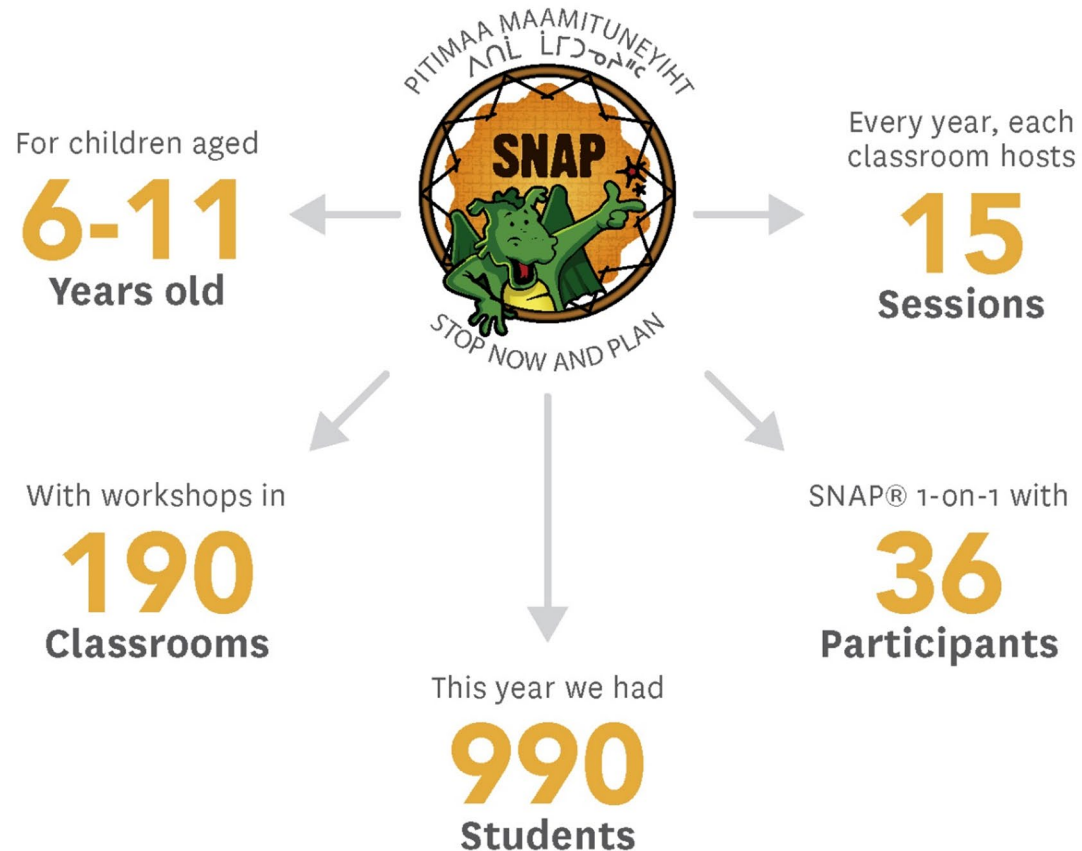


Department of Justice and  
Correctional Services



Cree School  
Board

## Stop Now and Plan



Stop Now And Plan®, in collaboration with the Child Development Institute and the Cree School Board, works with children on essential life skills such as how to deal with conflict, anger, frustration and anxiety. Having someone to help them identify the root cause of a decision can create an environment where change can occur in their lives.





# Youth Enrichment Services

Our Youth Enrichment Services (YES) provides students with a place to reflect on their attitude towards school, to improve self confidence, and catch up on schoolwork.

Summer Camps

Learn to Paddle

Calendar of Elders' Teachings

*"Never leave me and  
you will never beg,  
said the Land."*  
Isaac Dixon



YMCA



Department of Justice and  
Correctional Services



Cree School Board

We helped  
**106**  
Students

**31%**  
Elementary  
Students

**69%**  
High School  
Students



With  
**95**  
Reintegrating  
Successfully

A rate of  
**90%**

Referred students participate in **workshops** such as:



Anti-Bullying



Reflection Sessions



Self-Esteem



Motivation



Art Therapy



Counselling



## The 3 Cree Justice Funds



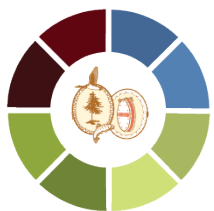
## Cree Justice Funds



The funds are about engaging the Cree entities and communities to form a stronger collaboration effort on issues impacting the Cree Nation. The Justice Funds build new relationships with shared objectives of having healthier and safer Cree communities.

The Corrections Fund is no longer a fund in 2020-2021 but instead a new C.R.E.E. and C.O.R.E. Program have been developed to replace it.

The Youth Engagement Fund is meant for Youth Councils or Departments to apply to as it is about Youth having resources to address issues they would like to work on.



## Employee Initiatives

Building upon the local connections our staff have in the communities they live and work, we created a fund to allow them to develop local initiatives with partners to achieve similar objectives to the Cree Justice Funds – healthier and safer Cree communities.

The program was developed to encourage people to go beyond normal duties, and to do that extra effort that could make a significant impact in the lives of their clients.

Our employees initiated

**10**  
programs

with

**+310**  
Participants

As the **employees** are **local** and so are the **clientele**, the approach will build upon the **values** of that community, with programs like:



### Rock Your Gloves

Connecting with Your Identity



### Beading with Youth

Building Relationships with At-Risk Youth



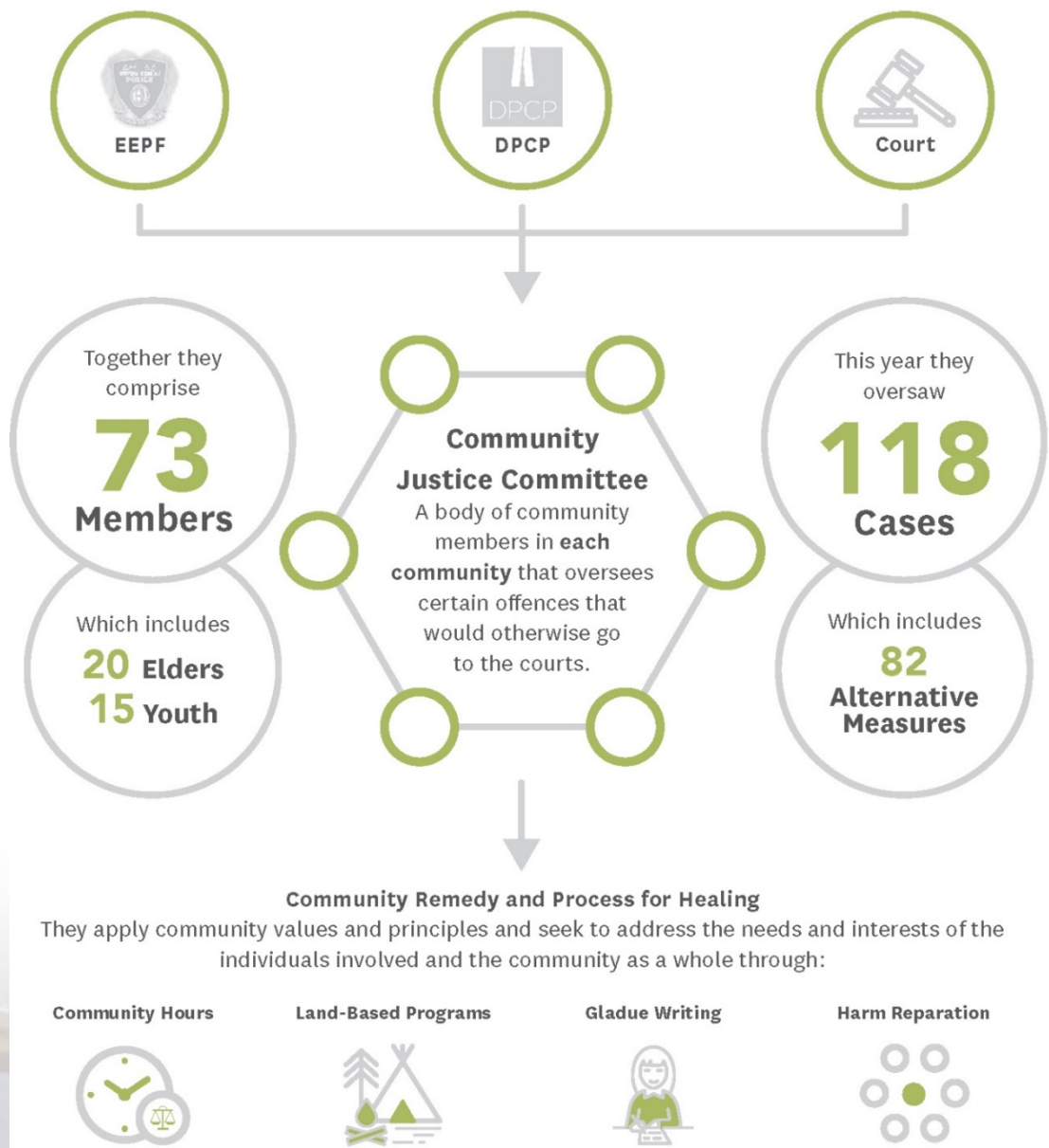
### Learning to Cook

Teaching Self-sufficiency and Self-care



### Together for Literacy

Essential Skills for Employability



## Community Justice Committees



One of the key justice initiatives in a Cree community is the Community Justice Committee. A number of cases are redirected to these bodies each year to allow for the community to have a voice in how harm is addressed. We are appreciative of the many community members who volunteer their time to be an important part of our community based justice systems.



## Community Programming

In addition to overseeing certain offences, Community Justice Committees also organize programs that are aimed at Cree individuals who are at higher risk of becoming involved with the justice system.

With local justice committees involved in programming, they help choose participants based on needs and suitability. They also can draw upon local values and ways to recommend cultural, community and land based programs.

Some of these programs have evolved into being recognized by the courts as diversion or restorative justice programming.

This year CJsCs administered

**43**  
programs

with

**+490**  
Participants

By collaborating with **local communities**, we can offer a variety of programs to our clients, such as:



Arts & Crafts Program



Crime Prevention Week



Relationship Workshop



Parka Making Program



Land Based Programs



Goosebreak for Couples





# Community Prosecution Services and Cree Neighbourhood Watch Program

## COMMUNITY PROSECUTION SERVICES

We provide funding to the Cree First Nations to assist with the cost of prosecution of offences under their local laws, the laws of the Cree Nation Government or the *Highway Safety Code*.

This funding is provided through an annual **Funding Agreement** between the Cree First Nation and the Cree Nation Government.

## CREE NEIGHBOURHOOD WATCH PROGRAM



A contribution is also provided to each Cree First Nation for the implementation of the Cree Neighbourhood Watch Program (\$25,000).

This Program provides means of reducing the opportunity for crime to occur through the active participation of citizens in crime prevention. The EEPF designed a manual to accompany the program, and Police Commission presented it at the CNGov.

It is designed to train residents to report suspicious activities in their neighbourhoods as well as to develop other crime prevention mechanisms such as home security methods and personal property registration.



# Community Prosecution Services and Cree Neighbourhood Watch Program

## COMPLIANCE REPORTING

Cree First Nations are required to provide a report on how the funding is used during the financial year, including statistics.



**These reports are mandatory.**

- Enable us to develop more targeted programs and services
- Facilitate CNG compliance with the Justice Agreement signed with the Quebec government in 2007

We are counting on your collaboration to submit any outstanding reports for past years and, for future years, to submit the report as soon as possible after the end of the financial year (March 31<sup>st</sup>)

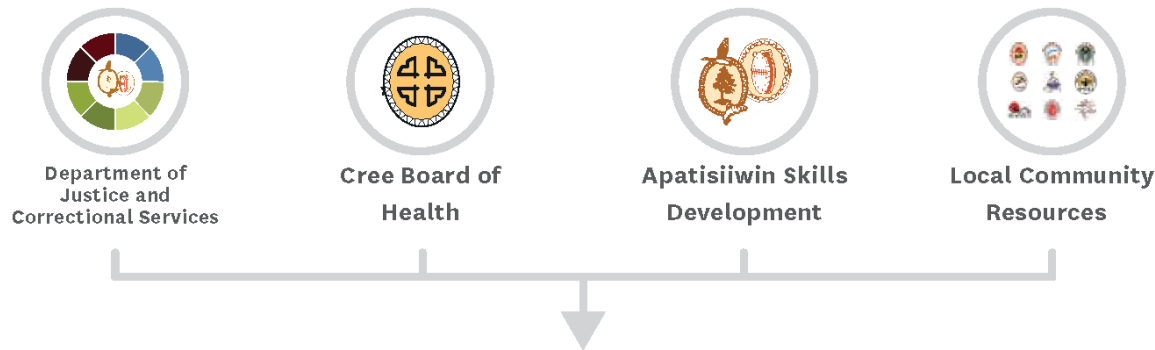
### Content of Report

- Breakdown of use of funds for the prosecution of offenses under (i) local laws (ii) Cree Nation Government laws and (iii) *Highway Safety Code*
- Tables related to each of these categories with statistics on prosecution of cases (*e.g.* types of offences)
- Activity report on uses of funding in relation to the Neighbourhood Watch Program

The services will be given to **Cree clients** that are



Through our various **partners**



Offering a variety of **services** such as:

- Career counseling
- Life-skills development
- C.R.E.E. Program
- Land-Based programs
- Addictions program
- Anger management
- Psychosocial counselling
- Mindfulness programs

## Community Transitional Centres



We know that our communities need our support with reintegration of criminalized individuals – and others. The Federal and Provincial corrections systems recommend we create this support at the community level, in recognition that the need cannot be met in the corrections systems.

We will build pilot Tiny Home Communities this year in the Cree Nation

- ✓ Waskaganish
- ✓ Chisasibi
- ✓ Mistissini

Each Tiny Home Community offers:

- a **structured, supported** transitional **environment**
- programming offered in collaboration with partner organizations including Cree Health and ASD.

# Community Transitional Centres

It is for members of your community to be in a supervised living area that will work with local government and the Health Board to provide support services for residents.



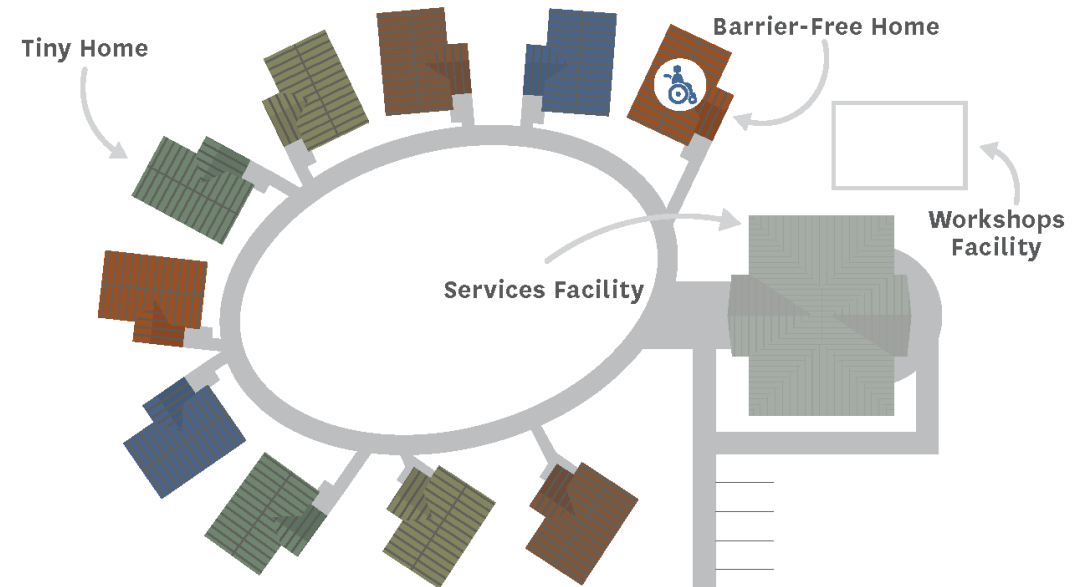
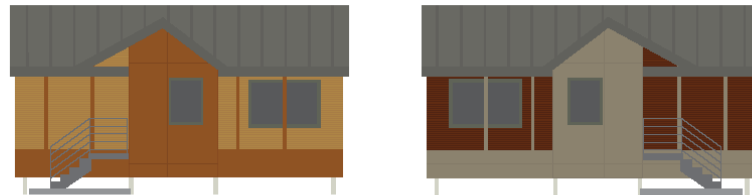
## Services Facility

Clients will receive services through a specialized facility located in the community.



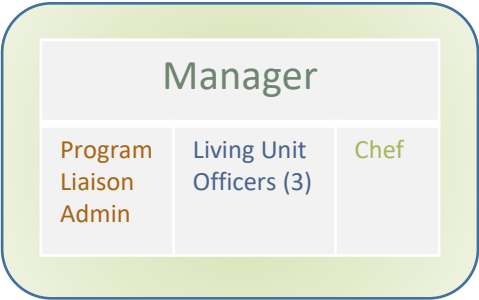
## Tiny Homes

In order to facilitate their healing journey clients will be housed in tiny homes.





# Community Transitional Centres



## Intake

- Clients **apply**
- Applications reviewed
- Acceptance
- Set **goals**
- **Code of Conduct**
- Move in

## Programming

**Cree culture** and connection to land

**24-hour** supervised environment

- Substance Use
- Mental health
  - Anger management
  - Healthy relationships
  - Educational support
  - Job skills
  - Life skills
  - Community connections (housing, health care, etc.)

## Transition

- Clients are able to **find work**
- Clients are able to **live independently**
- Clients are able to **access support** in the community
- Clients have the tools to form **healthy relationships** at home, at work, and in the community

### Rights

- Safety
- Respect
- Confidentiality

### Responsibilities

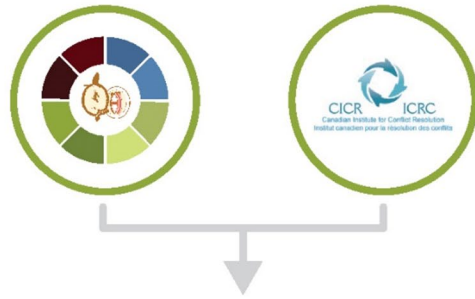
- Participate
- Code of Conduct

### Rules

- Alcohol/Drugs
- Firearms
- Violence
- Fraternization
- Intimate relations

### Discipline

- Restitution
- Goal-setting
- Eviction



To complete the training it takes:

**140**  
Hours

**4**  
Weeks

To this day, we have had **106** Graduates

Participants from **14** different Organizations



The majority of our staff are trained in **Cree third party neutral training** provided by **CICR** in order for our team to incorporate their **expertise** in a conflict situation.

## Conflict Resolution Program



All of our staff begins their training with our signature Cree CICR program.

The criteria to take part in this experiential learning journey are:

- be fully available and committed
- Be open to change and transformation
- Be willing to participate in a learning community.

Elders have been added to the training program, as well as participants from a number of partner organizations and band governments.

The idea is that not all disputes need to go to an adversarial system (courts). There are respectful processes that allow us to work to resolve issues within communities and organizations.



## Cree CAVAC Services

Prior to the establishment of the Cree CAVAC offices, victims and witnesses did not have a support network to assist them through a difficult process and time. The strength of our team is their passion for the work, and to make a contribution that matters in the lives of those who have been impacted by criminal acts. The Cree team approach is about community and inclusiveness, and about the ability to actively listen to the stories of people who have been traumatized.



 **4 Cree CAVAC  
Offices in  
Eeyou Istchee**

1. Cree Northern CAVAC
2. Cree Central CAVAC
3. Cree Southern CAVAC
4. CAVAC Liaison Office



Ministère de la  
Sécurité Publique



Department of Justice  
and Correctional Services



Correctional  
Services Canada

Supporting **Cree clients** that are:



Detained



Released

By providing them with **services** from:

**118**

Counselling  
Sessions

+

**15**

Traditional  
Meal Programs

+

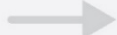
**125**

Call Requests  
Answered

←

Our Corrections  
team that  
supported our  
clients through

Our Department  
Psychologist,  
who made



**17**

Community  
Visits



**33**

Halfway House  
Visits



**18**

Federal  
Visits



**62**

Provincial  
Visits

# Corrections and Reintegration Work



The Corrections team works collaboratively with provincial and federal detention institutions, Cree communities and organizations, and other Cree Nation Government Departments. Our philosophy on corrections is about providing support and environments to facilitate change in individuals, help communities heal, and prevent harm from recurring.

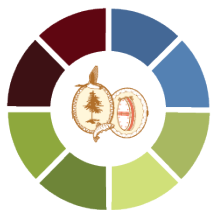




## Courts Today

During the pandemic, our courts have adjusted for the safety and wellbeing of all, keeping in mind the importance of maintaining all court dates.





## C.R.E.E. Support Services

The C.R.E.E. Program addresses the absence of effective community and land-based rehabilitation programming outside the corrections system by providing participants with the tools, guidance and support needed to lead productive lives.

We want to expand this to all communities. This programming will complement the Tiny Homes Communities. It is about creating value in people, and providing a program to allow them to change.



Apatisiwin Skills  
Development



Department of Justice and  
Correctional Services



Cree  
Communities

**C.R.E.E.**  
Cree Reintegration, Education and Employment Program

Providing employment and training opportunities for clients in **3 phases**:

**1**

Program  
Initiation

This phase is all about bringing participants, employers and mentors into the Program.

**2**

Active  
Program

Employment begins and regular follow-up mechanisms start in addition to services of training and mentoring.

**3**

Program  
Close

Employment and training evaluations, creating a client follow up plan, and getting feedback on how to improve the program.

**4,908**

Employment hours this year

Through work placements, we are proactively helping clients **break the cycle** of reoffending by reintegrating them in **their community**. With programs like these we will be continuously fostering an **equitable, just, and ever strong Cree Nation**.

# Meegwetch - Thank You



This presentation is provided for information purposes only and it is without prejudice to any rights of the Crees.