

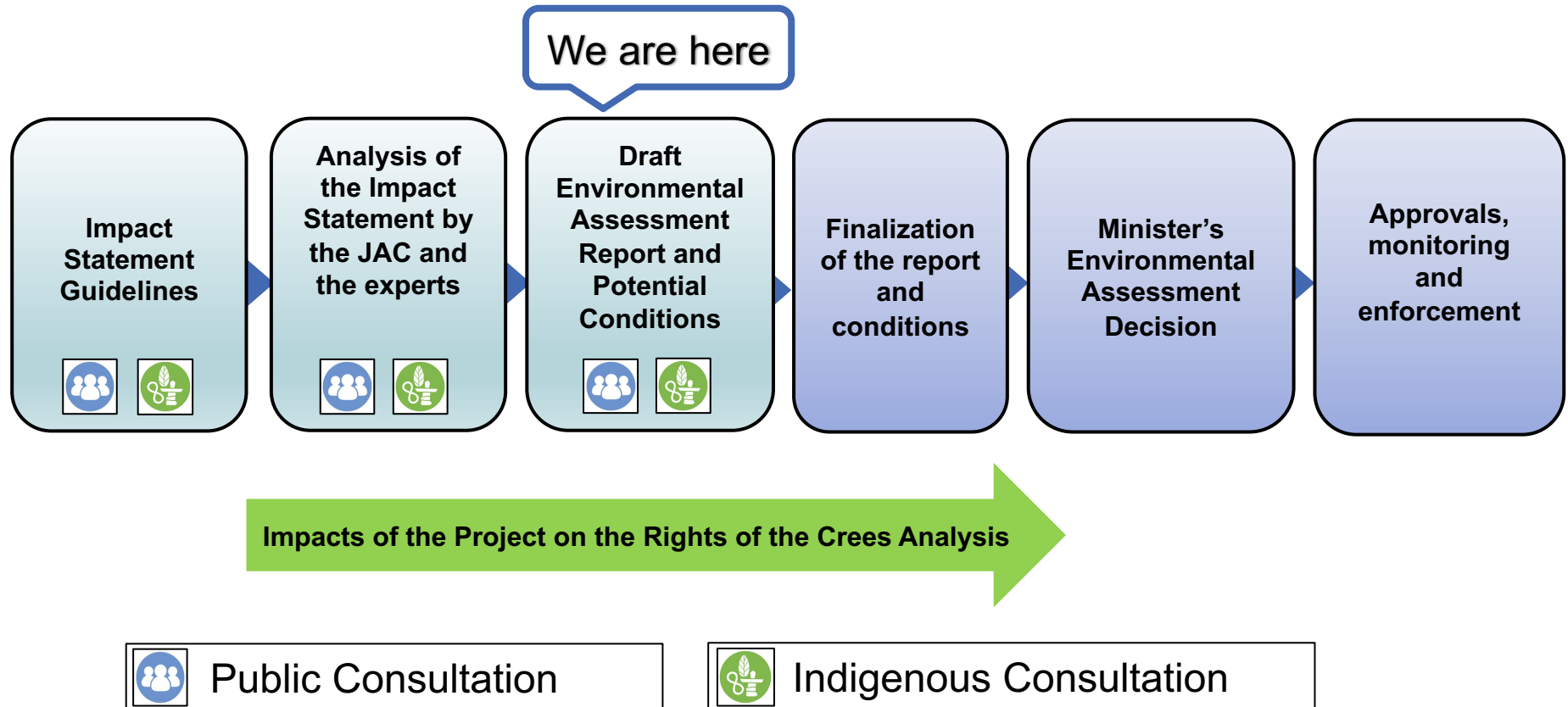
CONSULTATION ON THE FEDERAL DRAFT ENVIRONMENTAL ASSESSMENT REPORT & POTENTIAL CONDITIONS

Plan of the presentation

- The Federal Environmental Assessment Process under the *Canadian Environmental Assessment Act* (CEAA 2012)
- Objectives of the consultation session
- Project Overview
- Themes - Key Findings and Mitigation Measures
- Next Steps



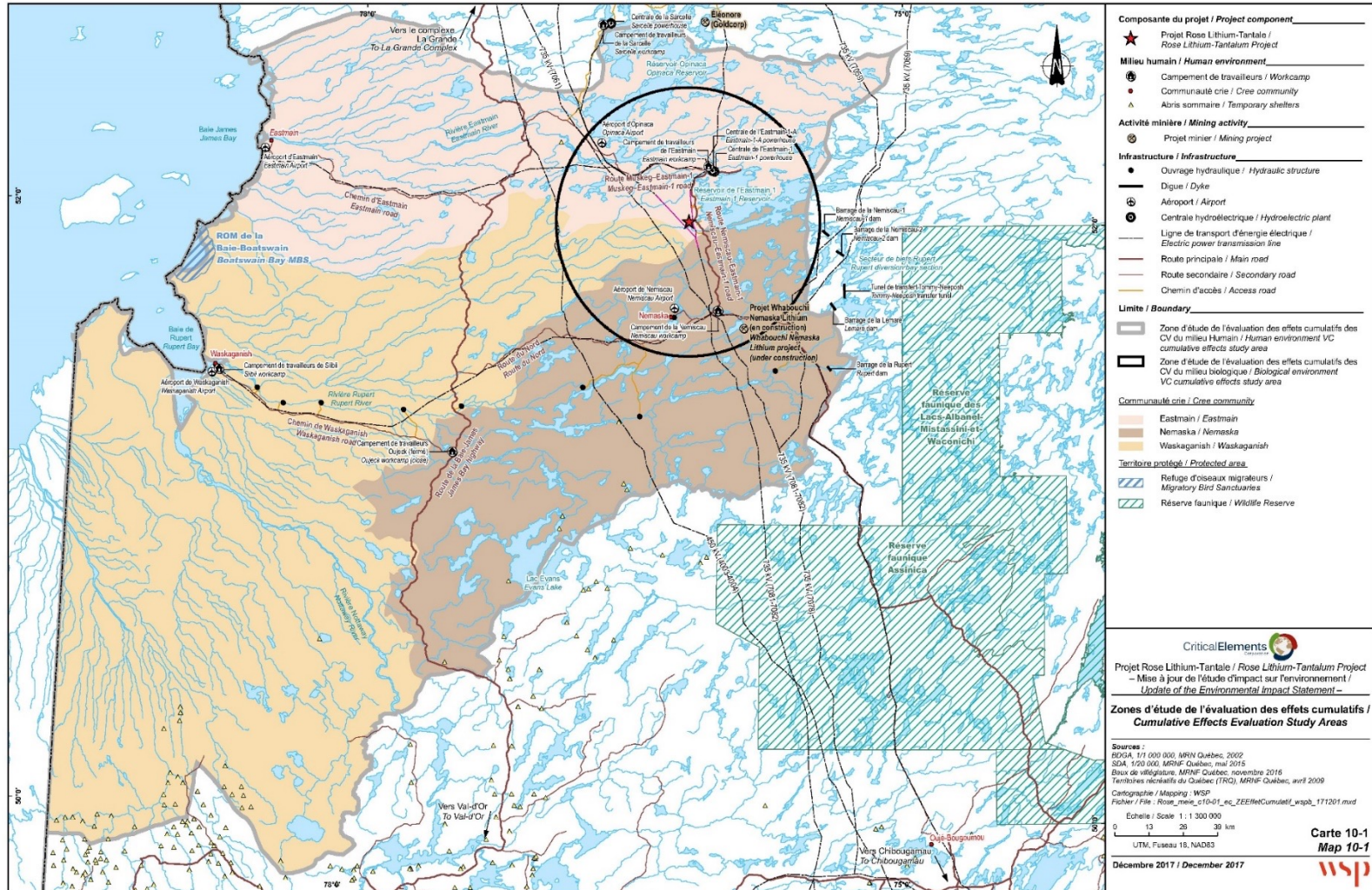
Federal Environmental Assessment Process



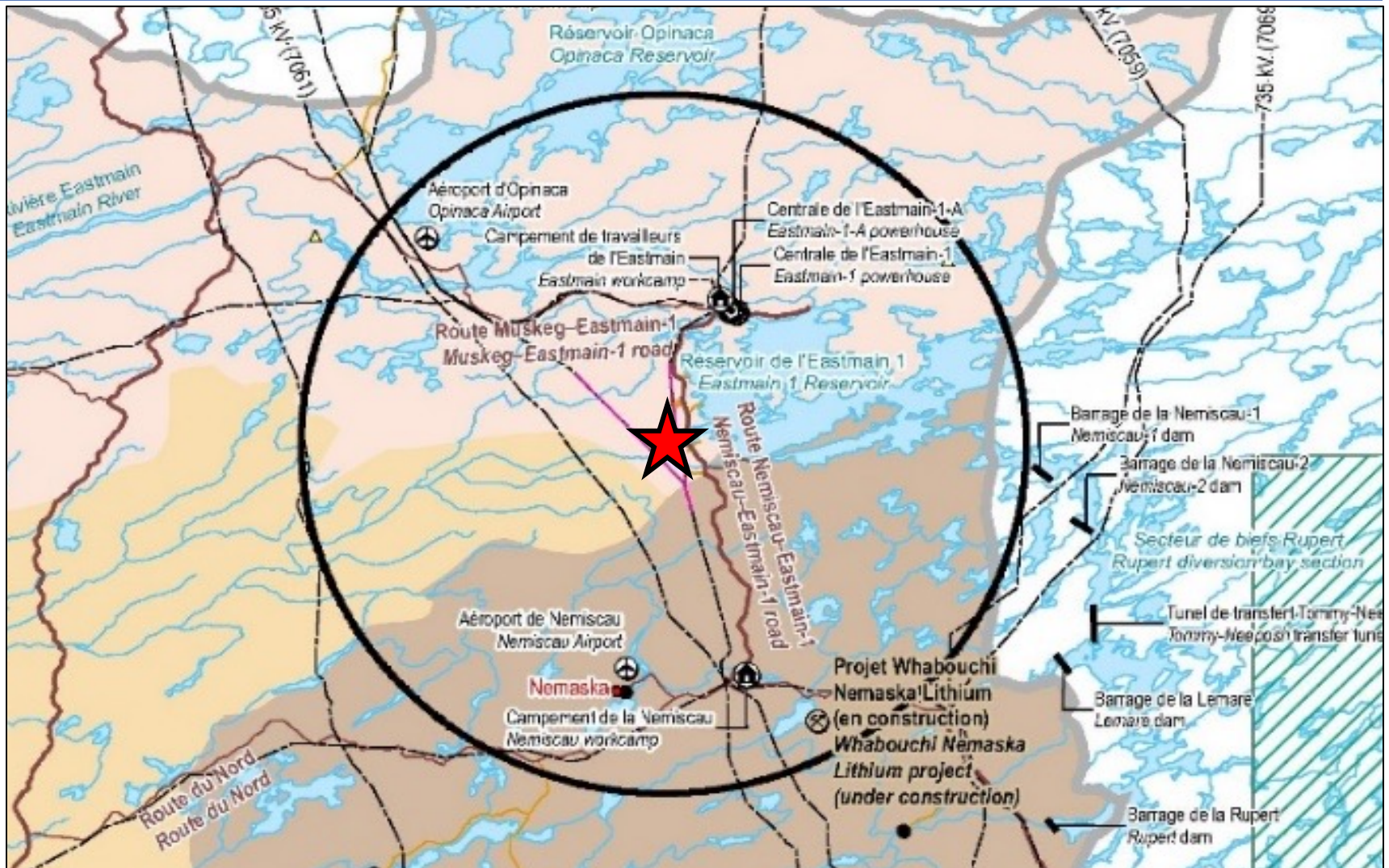
Session Objectives

- **Inform Cree Nations of the :**
 - Environmental Assessment Findings
 - Key Mitigation Measures to be recommended as Potential Conditions
- **Provide an opportunity for the Cree Nations to ask questions to:**
 - The Joint Assessment Committee (Cree Nation Government and Impact Assessment Agency of Canada)
 - The Expert Panel
- **Understand the Cree Nations' concerns and comments on:**
 - The Draft Environmental Assessment Report
 - The Key Mitigation Measures Identified by the JAC

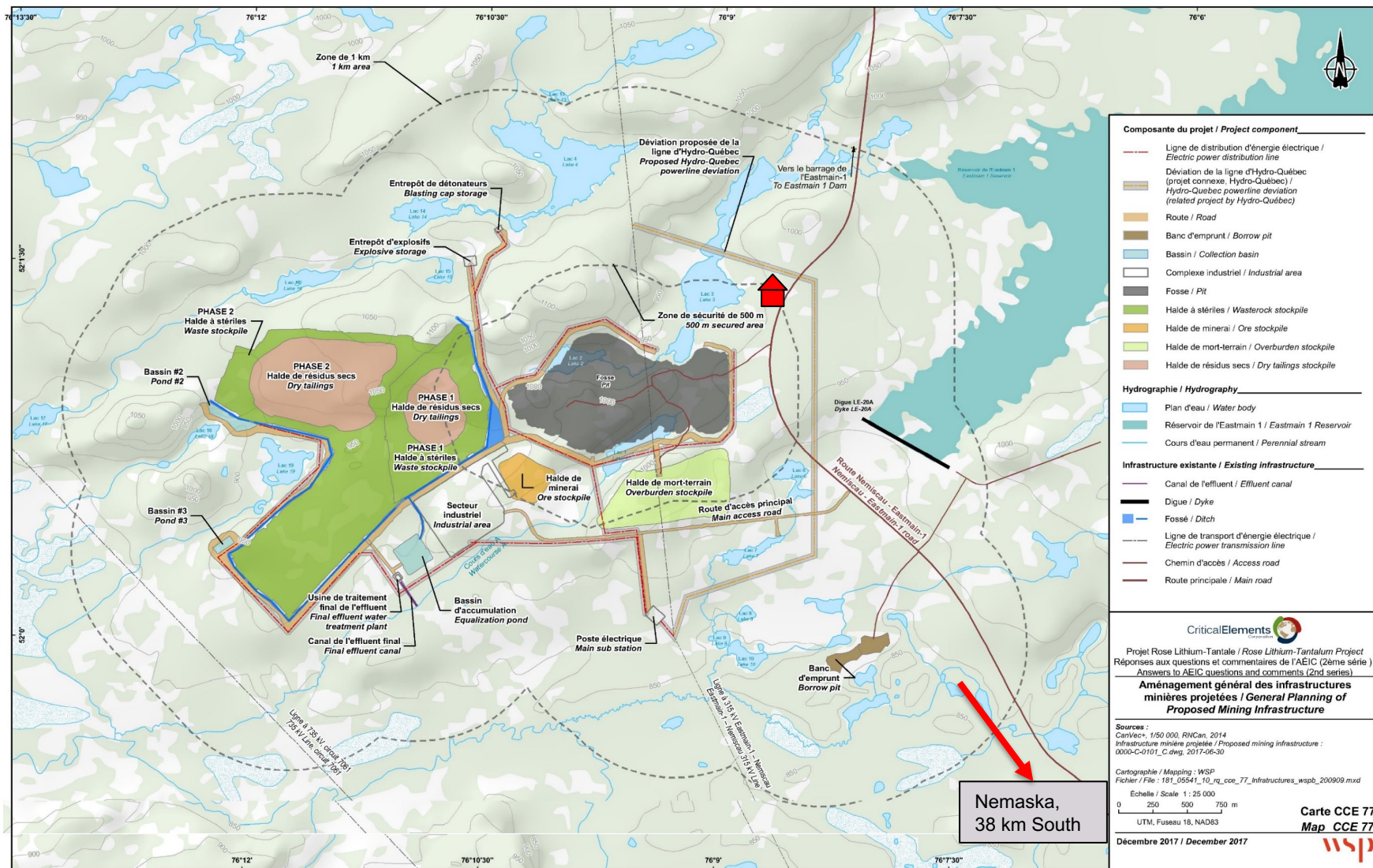
Location of the Project



Location of the Project – Close up view



Rose Lithium-Tantalum Mining Project



Themes of Draft Report

Fish and Fish Habitat	Current Use of Lands and Resources for Traditional Purposes by Cree Nations, <i>including cumulative effects</i>	Migratory Birds and Birds at Risk
Cree Health	Species at Risk	Wetlands
Greenhouse Gas Emissions	Physical and Cultural Heritage	Socio-Economic Conditions (CEAA 2012 and <i>under the Agreement</i>)
Effects of Accidents and Malfunctions	Environmental Effects on the Project	Cumulative Environmental Effects
Impacts of the Project on Cree Rights and Values		

Themes and Experts Present

Fish and Fish Habitat



- Fisheries and Oceans Canada
- Environment and Climate Change Canada
- Natural Resources Canada

Current Use of Lands and Resources



- Joint Assessment Committee
- Transport Canada

Cree Health



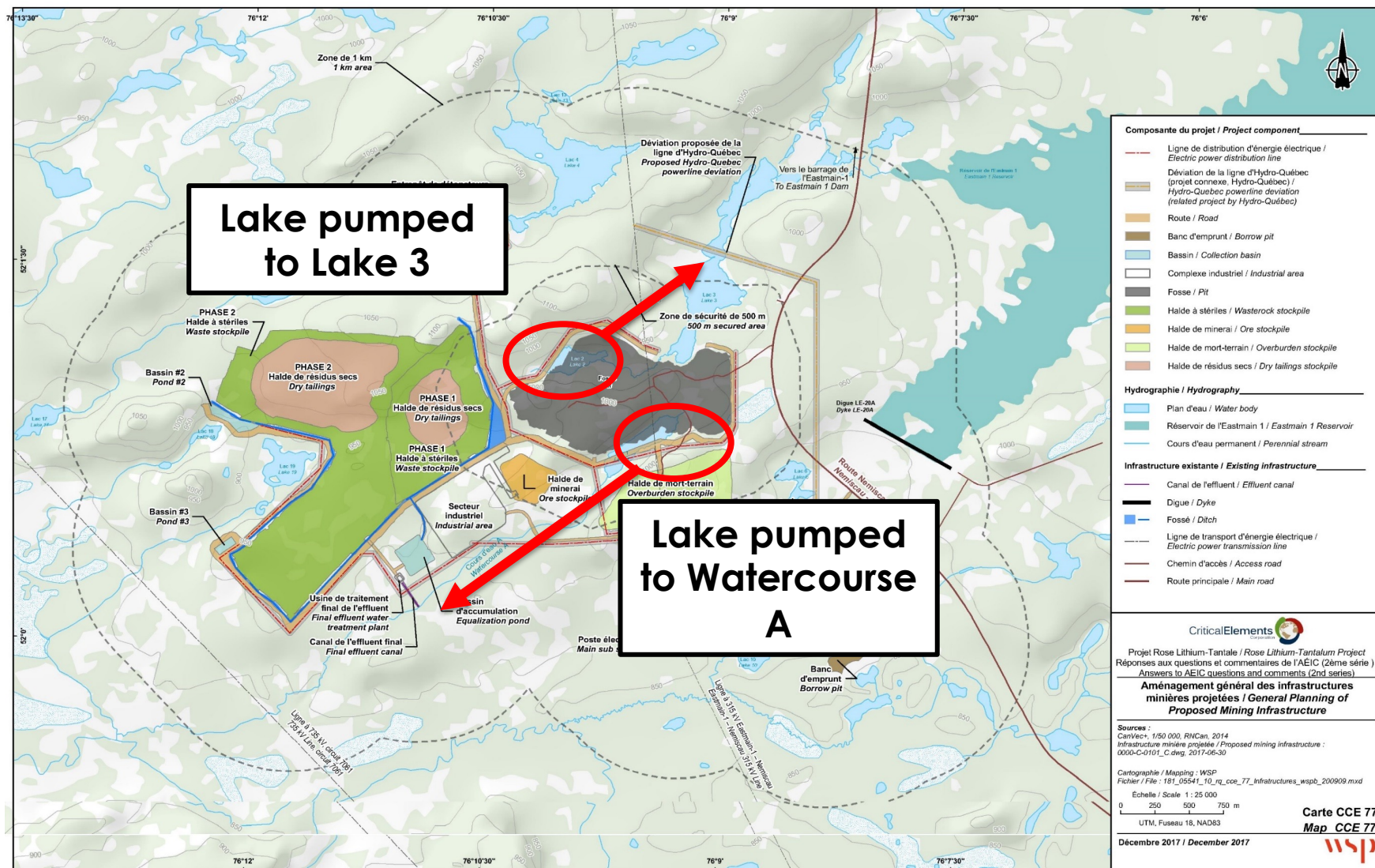
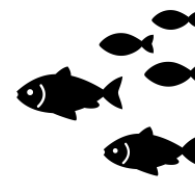
- Health Canada
- Cree Board of Health and Social Services of James Bay
- Environment and Climate Change Canada

Impacts on Cree Rights



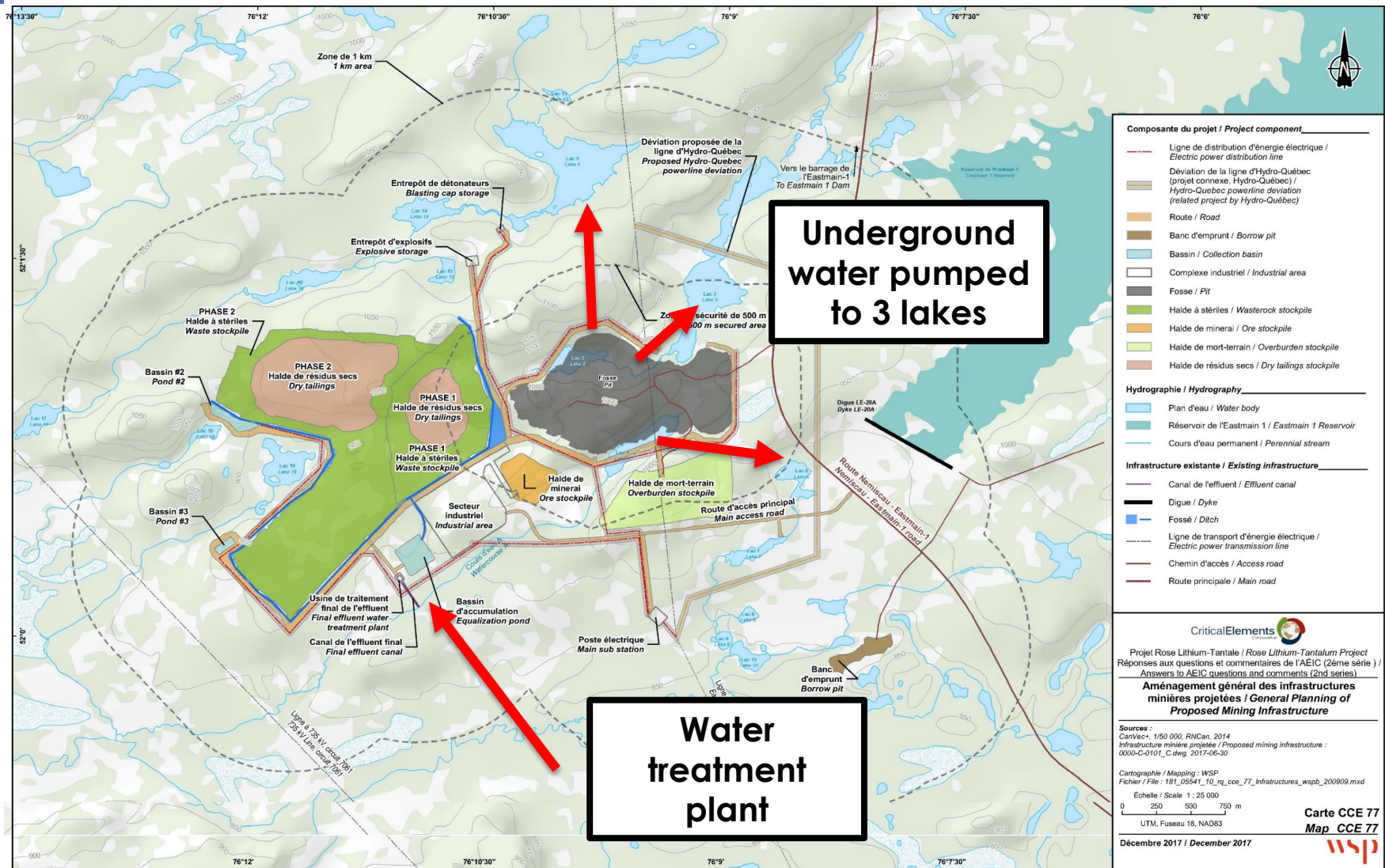
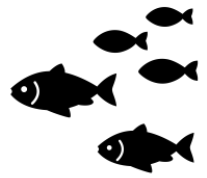
- Joint Assessment Committee

Fish and Fish Habitat - Potential Effects Construction Phase

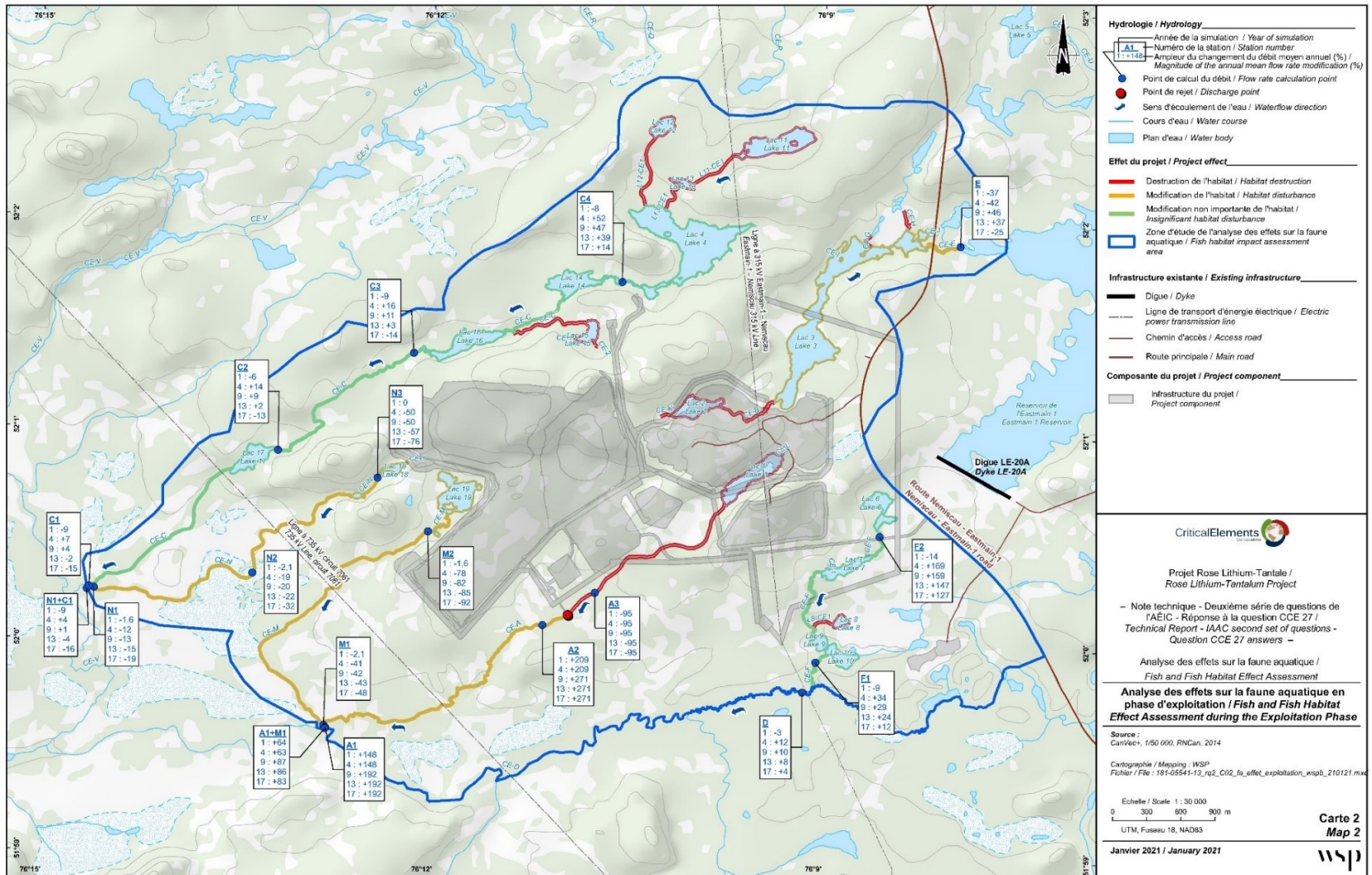
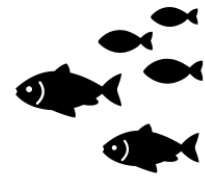


Fish and Fish Habitat - Potential Effects

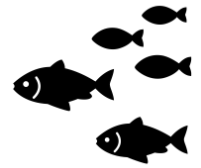
Operational phase



Fish and Fish Habitat - Potential Effects



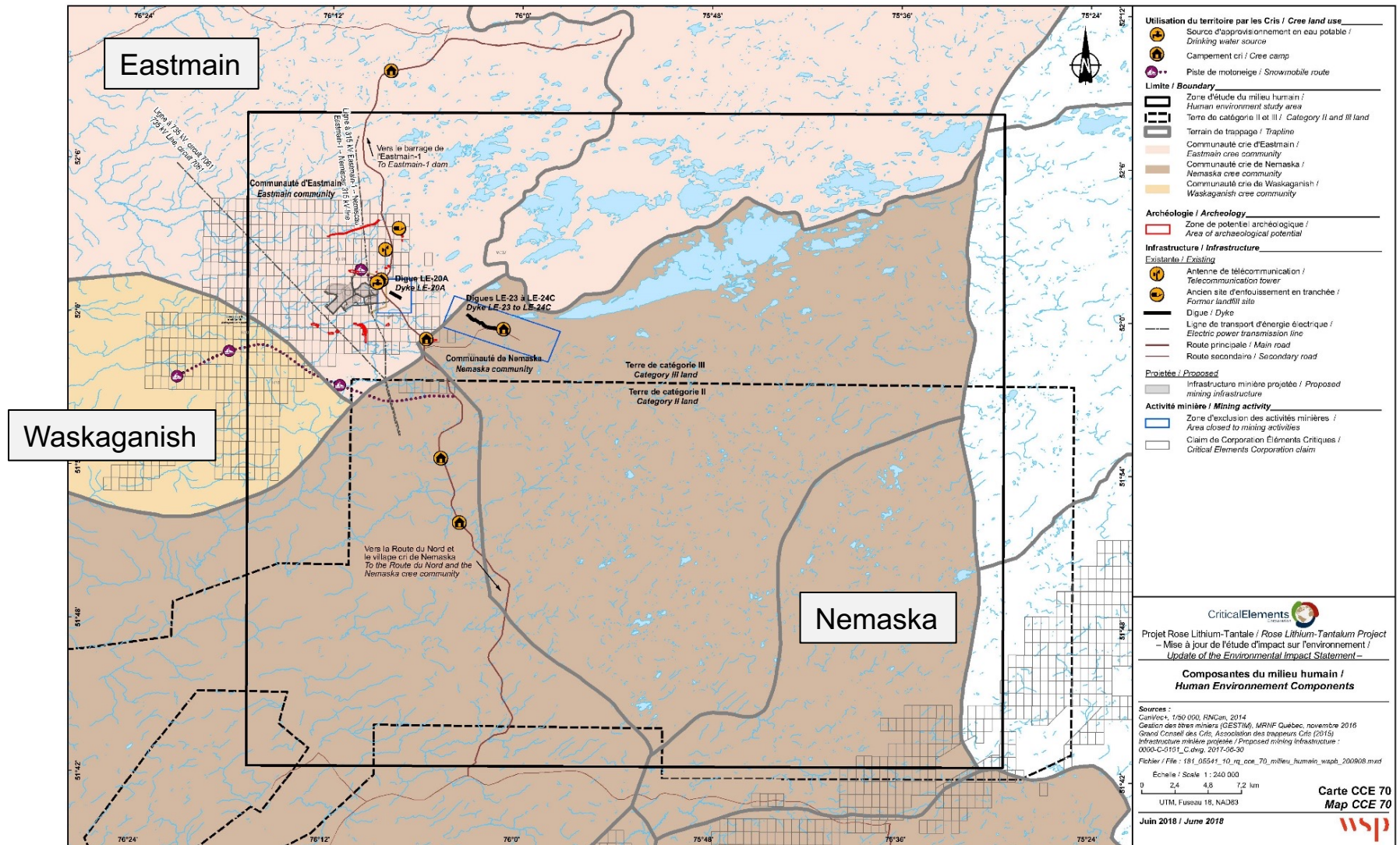
Fish and Fish Habitat – Key Mitigation Measures



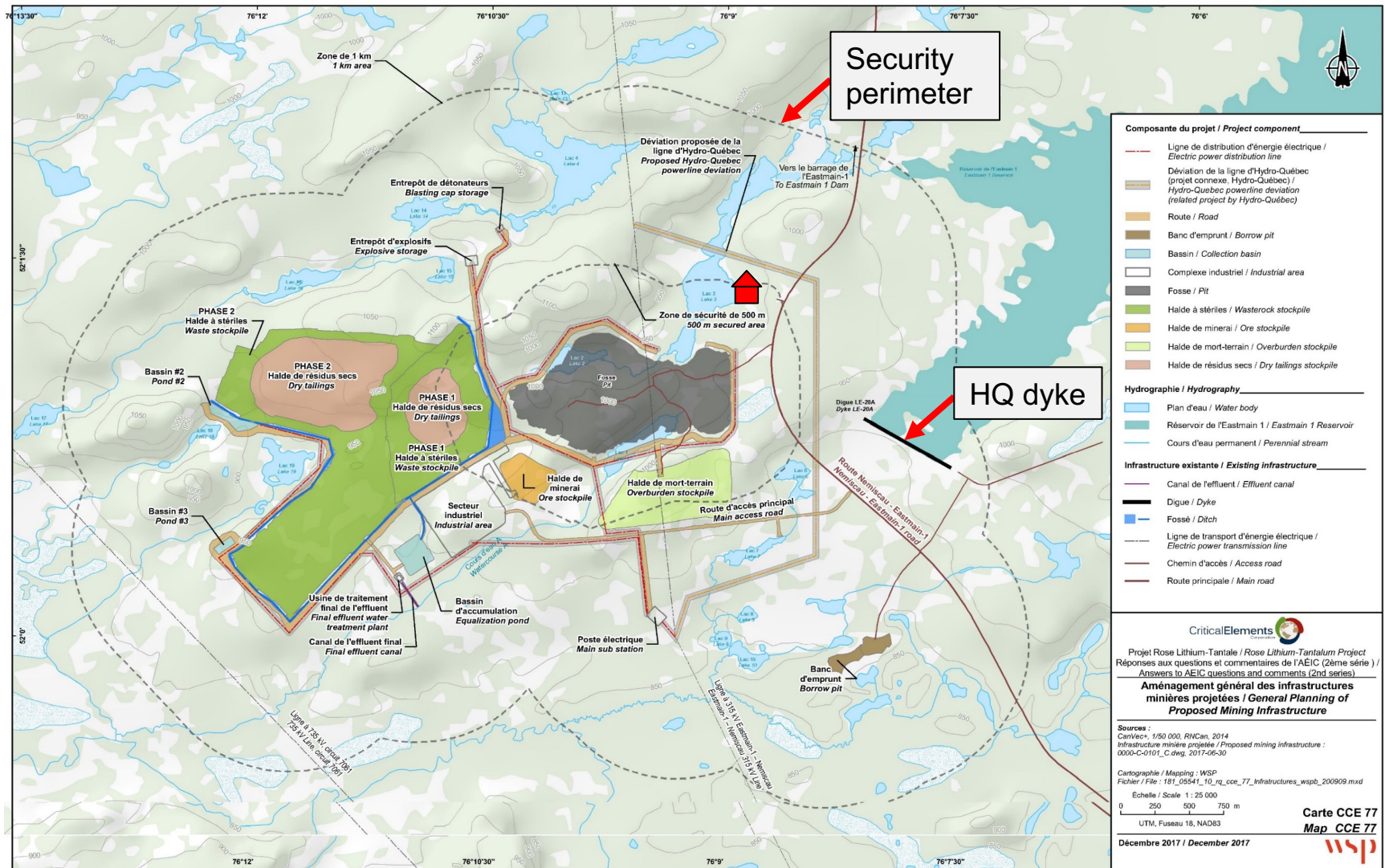
- **Compensation plan** developed with Cree stakeholders and approved by Fisheries and Oceans Canada
- Management and treatment of mine water according to **effluent quality standards**
- Management of mine water discharge so as to **minimize hydrological modifications**
- Follow-up program, including **monitoring** of water quality and water levels



Current Use of Lands and Resources - Potential Effects



Current Use of Lands and Resources - Potential Effects



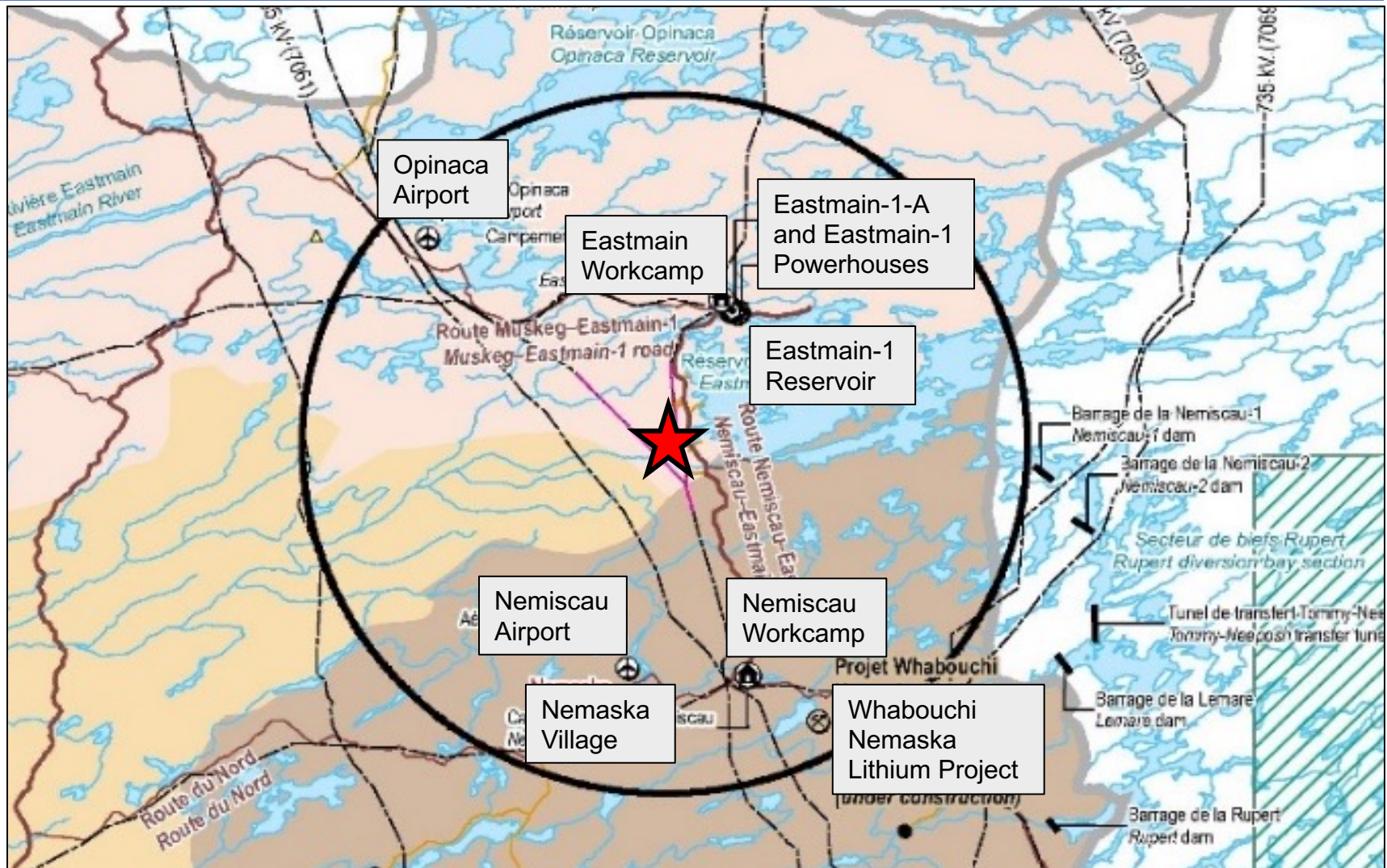
Current Use of Lands and Resources - Key Mitigation Measures



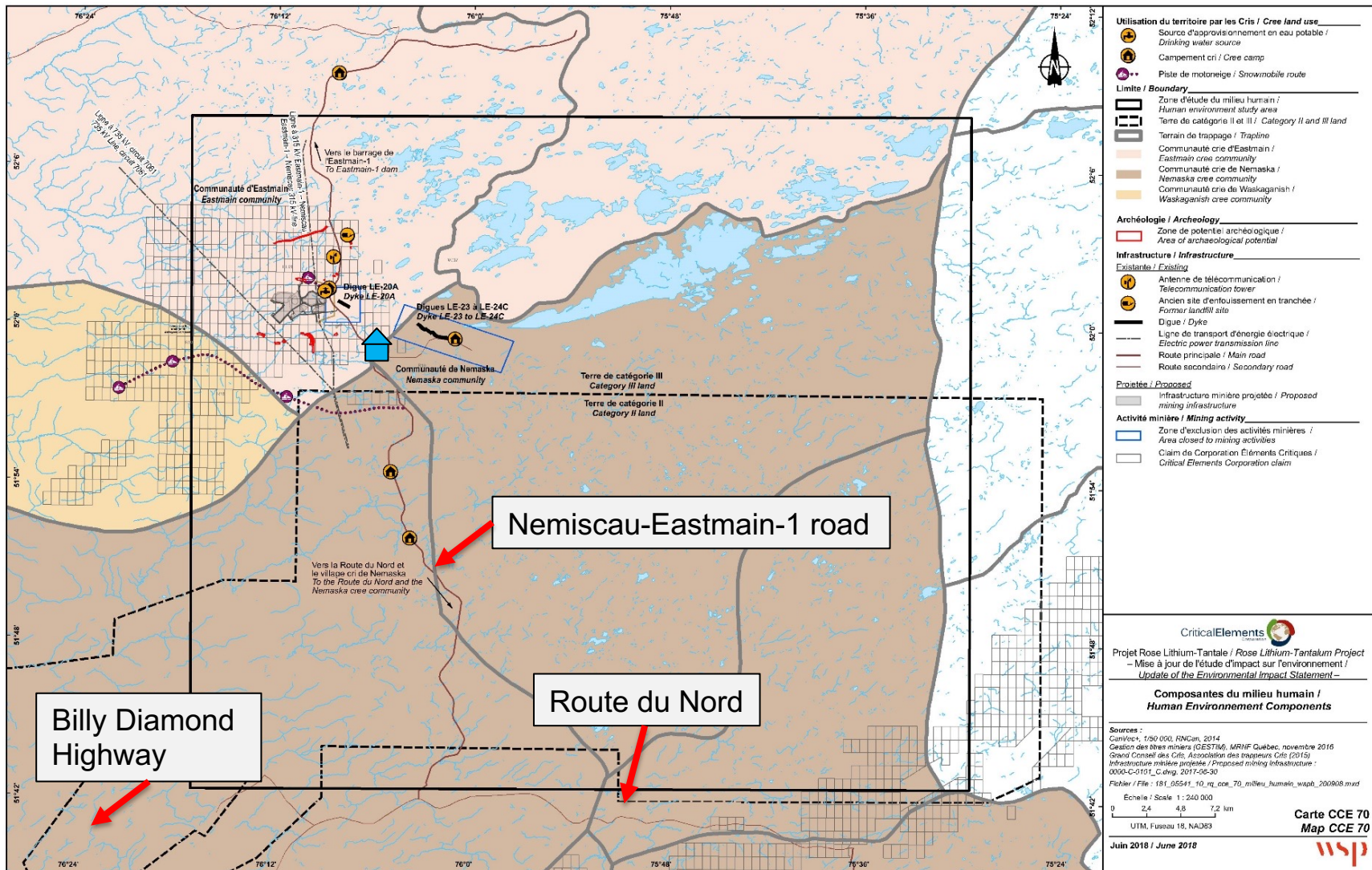
- **Prohibition** of all hunting, trapping and fishing activities on the mine site for employees
- Implementation of a **conflict resolution protocol**
- **Communication** of the results of the environmental monitoring
- Planning of heavy truck **transport activities**
- Implementation of a **communication plan**
- Adaptation of **blasting and transportation** activities



Current Use of Lands and Resources - Cumulative Effects



Cree Health - Potential Effects



Cree Health - Key Mitigation Measures



- **Validation of the assumptions and concentrations of contaminants** used as inputs in the traditional food contamination risk assessment
- **Dust** management plan
- Measures related to **water quality**
- Contingency plan
- **Communication plan** including a complaint management system
- **Air quality monitoring**



Conclusion on Residual Effects

- The Committee concludes that, taking into account the key mitigation measures in the Potential Conditions document, the project is **not likely to cause significant adverse environmental effects** on:
 - Fish and fish habitat;
 - Cree health;
 - Current use of lands and resources for traditional purposes.



Cree Values – Key Community Concerns



- **Health**

- Effects of mining processes on traditional foods
- Water quality
- Health effects of noise, vibrations, and dust (air quality)
- Fear of contamination: Avoidance of certain harvesting areas

- **Well-Being of Cree Nations**

- Sexual harassment of Cree women from mine workers
- Conflicts between workers from the South and Cree communities

- **Economic Prosperity**

- The ability of those who live off the land to continue to do so
- Jobs, contracts and training

- **Cree Hunting, Fishing and Trapping**

- Changes to the behavior and distribution of harvested species
- Conflicts with non-Cree workers hunting and fishing
- Effects of traffic and blasting on moose and goose break
- Fish quality and abundance

Cree Values – Key Community Concerns



- **Plants and Berry Picking**

- Contamination of traditional foods, including plants and berries
- Safety of berry pickers along the roads

- **Cultural and Natural Heritage**

- Disturbance of archaeological sites during mine development

- **Waterbodies, Wetlands and Vegetation**

- Contamination of fish and wetland habitats
- Loss of navigable waterways
- Restoration and revegetation of the site

- **Road Safety**

- Impacts of a larger volume of traffic (dust, road repairs, safety of other road users)
- Cumulative effects of traffic with other projects (existing and under development)
- Impacts of traffic on camps located near the road, especially during moose and goose break

Cree Values - Key Mitigation Measures (1/3)



Health	<ul style="list-style-type: none">• Dust control measures• Environmental monitoring and follow-up studies will be sent to the communities. These will include water, air and soil quality monitoring and the potential contamination of traditional foods.• A water treatment station will be installed and mine discharge waters will have to apply with federal and provincial water quality standards.
Well-being	<ul style="list-style-type: none">• Conflict resolution protocol to address issues between community members and mine workers• Sexual harassment policy and clause in workers' contracts• Cree community liaison officer and multi-cultural integration programs
Economic Prosperity	<ul style="list-style-type: none">• Adapted work schedule for Cree mine workers (leaves for traditional activities)• Provide training programs• Communication plan to inform different local stakeholders of HR needs• Cree job counselor

Cree Values - Key Mitigation Measures (2/3)



Cree hunting, trapping and fishing	<ul style="list-style-type: none">• Clause forbidding hunting and fishing equipment in employee contracts• Action plan in case of caribou presence near the mine• Fish compensation plan to be developed with Fisheries and Oceans Canada and Cree stakeholders• Modification of blasting and trucking schedule during goose and moose breaks• Monitoring and frequent communication with land users on the mitigation measures
Plants and berry picking	<ul style="list-style-type: none">• Tallyman of RE01 will be consulted on the rehabilitation plan and it will be sent to communities.• Progressive revegetation will be done as soon as possible using a diversity of plant species.
Cultural and natural heritage	<ul style="list-style-type: none">• An exhaustive archaeological inventory will be completed before construction starts• Work will be stopped as soon as any discovery is made• Key actors will be contacted as soon as possible should any discoveries be made

Cree Values - Key Mitigation Measures

(3/3)



Waterbodies, wetlands and vegetation	<ul style="list-style-type: none">• Wetland compensation plan will be elaborated in collaboration with Cree stakeholders• Monitoring of water quality, flow rates and water levels in waterbodies associated with the project, including the final effluent• Fish and fish habitat compensation plan will be elaborated with Fisheries and Oceans Canada and Cree stakeholders• Monitoring programs for wildlife species (fish, migratory birds, species at risk)
Road Safety	<ul style="list-style-type: none">• Spread truck passages out over the day and the week.• Limit the number of transports during the evening and night.• 100 trucks per week maximum during moose and goose break• Follow-up of the success of these measures on the harvesting practices of the land users• Follow-ups with the affected communities• Trucks will be limited to 80 km per hour

Cree Values - Conclusions



- The Cree Nation Government determined that the accommodation and mitigation measure put in place by the proponent and the additional ones recommended by the JAC are satisfactory to cope with the impacts on Cree values.
- The Impact Assessment Agency of Canada carried out a preliminary assessment of the impacts to Cree rights and values, which will be enhanced by the consultations.



Potential Conditions Document

- **Enforceable conditions** to avoid significant environmental effects
- **Requirements for consultation** with potentially affected parties and Cree Nations
- **Requirements for requested follow-up programs**, including the filing of an annual report to the JAC
- Requirement for the proponent to make **annual reports available on its website**

Next Steps

- Analysis of comments received from Cree Nations and the public. Comments can be sent to (before May 28th):
 - iaac.minerose-rosemine.aeic@canada.ca
 - Your community contact
- Preparation of final versions
 - Environmental Assessment Report
 - Potential Conditions document
- Send to Minister of Environment and Climate Change for decision



Thank you for your attention



Impact Assessment
Agency of Canada

Agence d'évaluation
d'impact du Canada



Grand Council of the Crees (Eeyou Istchee)
Grand Conseil des Cris (Eeyou Istchee)

ᐃᓂᓂ ᐃᓂᓂᓂᓂᓂ
Cree Nation Government
Gouvernement de la Nation Crie

Canada

A photograph of a person with long brown hair, seen from behind, wearing a red sweater and raising their right hand. They are in a meeting or presentation setting with other people and a whiteboard visible in the blurred background.

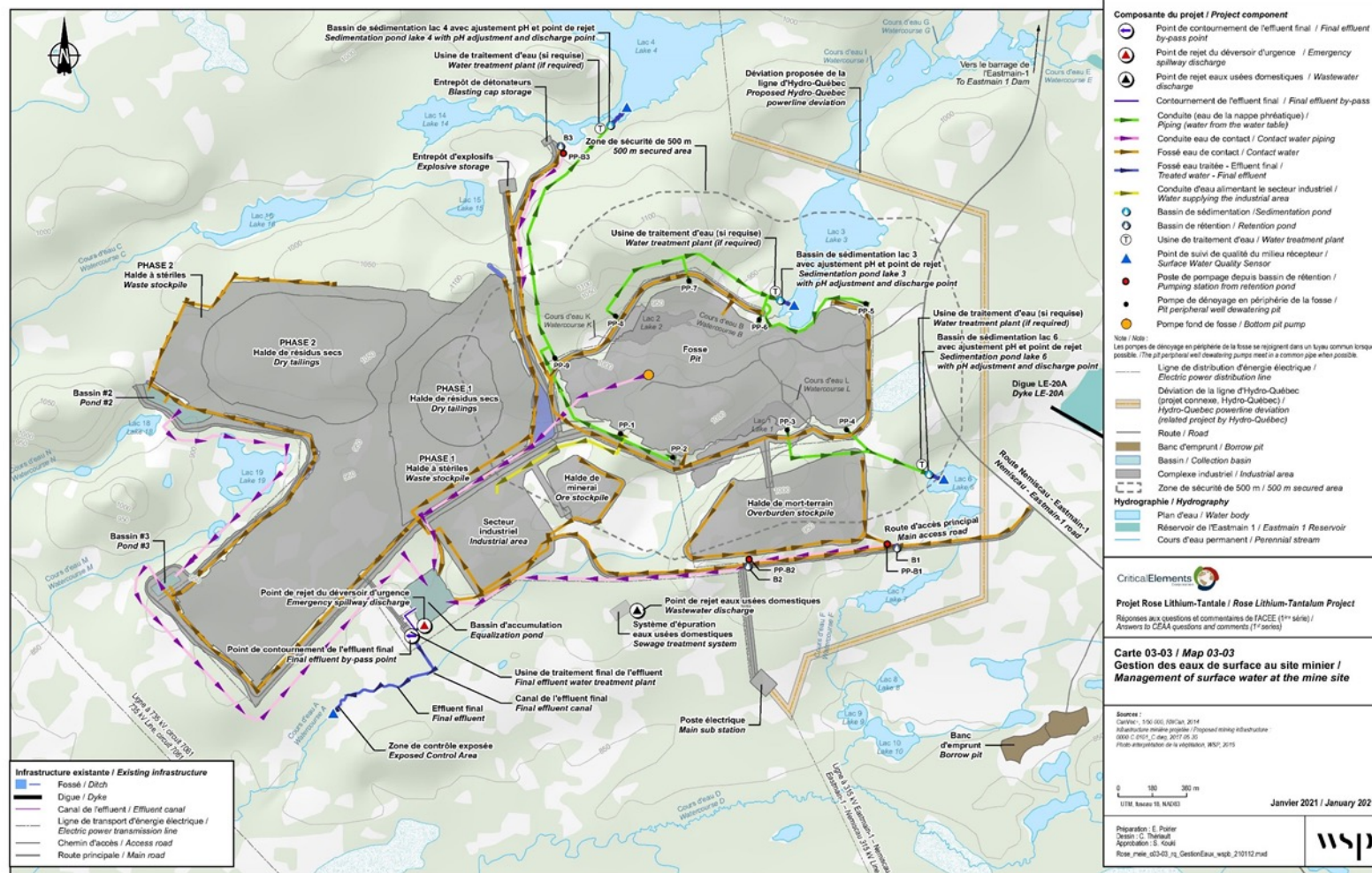
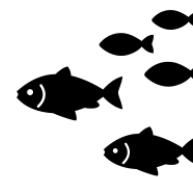
Open discussion

- Questions and comments

Annex

Fish and Fish Habitat - Potential Effects

Water management



Analysis on Fish and Fish Habitat

- The habitat loss, associated fish mortality and changes to water quality are **local in scope**.
- The effects would be felt on a **continuous and long-term** basis.
- **The habitat loss and mortality** are considered **irreversible** and of **high intensity**. **The intensity** of the **modifications to water quality** is considered **low**.
- The level of residual effects of the project on fish and fish habitat would be moderate. The Committee therefore concludes that the residual **effects are insignificant**.

Analysis on Current Use of Lands and Resources

- The **extent** of the effects would be **local**.
- The **duration** of the effects would be **long**.
- The **frequency** would be **continuous**.
- The effects of the project would be **partially reversible**.
- The **intensity** of the effects would be **medium**.

Analysis on Cree Health

- Since it is expected that contaminant levels close to the applicable standards and criteria could be measured in the air despite the planned management and mitigation measures, **the intensity of the effect would be moderate.**
- The health effects of the predicted exceedances would be **local in scope.** They would be felt on the **long term** and are considered **reversible.**
- The effects would be **intermittent** for crystalline silica and **continuous** for other contaminants, such as nitrogen dioxide.