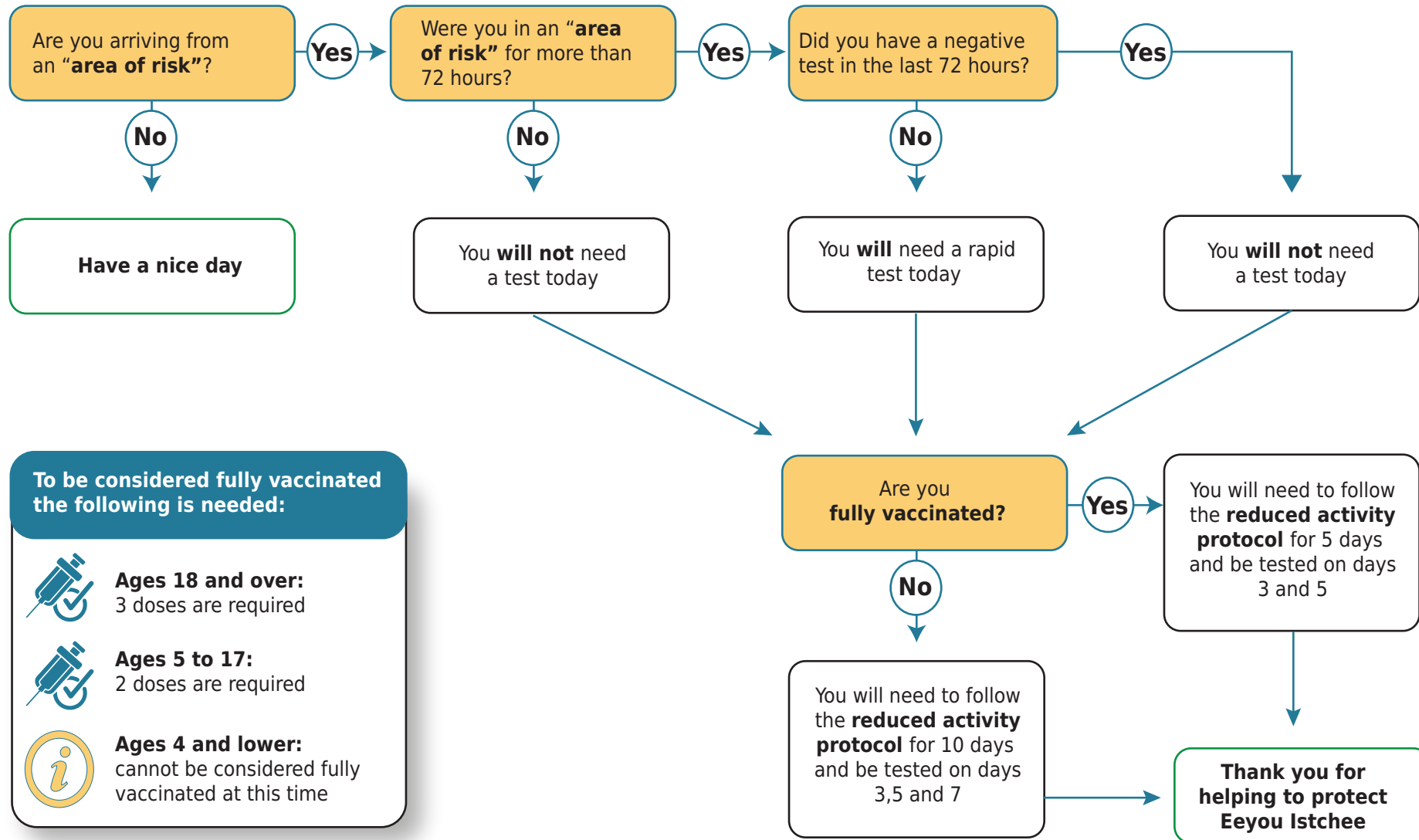
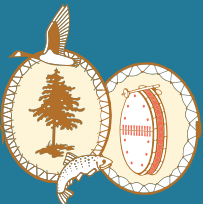


Deconfinement Management Plan For Eeyou Istchee

DECONFINEMENT STEP 1
February 25 to March 10, 2022



TESTS



Reduced Activity Protocol

Individual may go outdoors but **not to enter indoor public places;**

Individuals **with the authorization of the employer may go to work** with mask and protective gear according to working conditions at all times when around others (i.e. clinic, construction site, office, etc.);

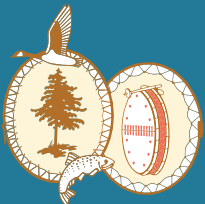
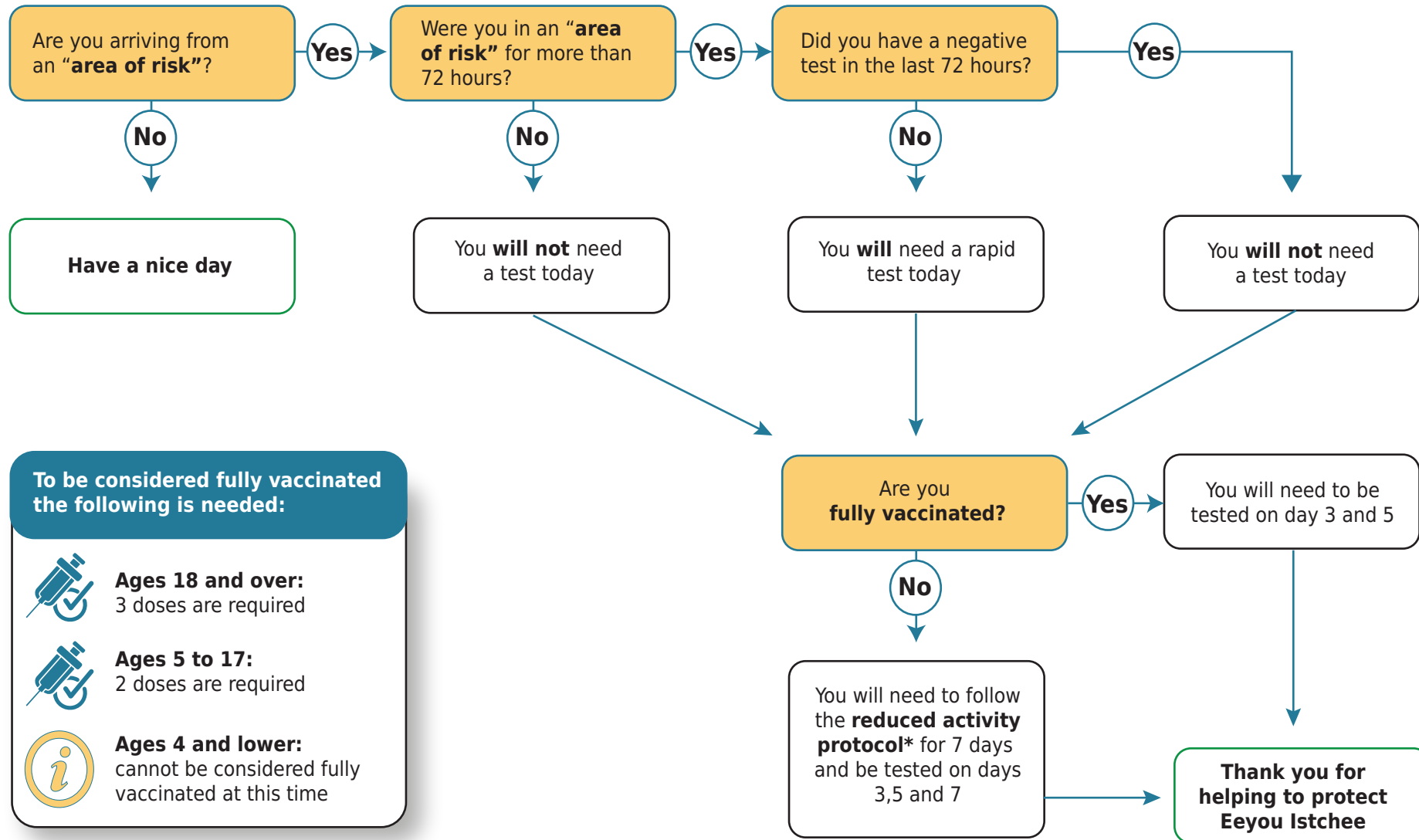
Going to school will be subject to the applicable Cree School Board protocols

Refrain from visiting in the homes of others

Do not attend indoor public or private gatherings

Deconfinement Management Plan For Eeyou Istchee

DECONFINEMENT STEP 2
March 11, 2022 to March 24, 2022



Reduced Activity Protocol*

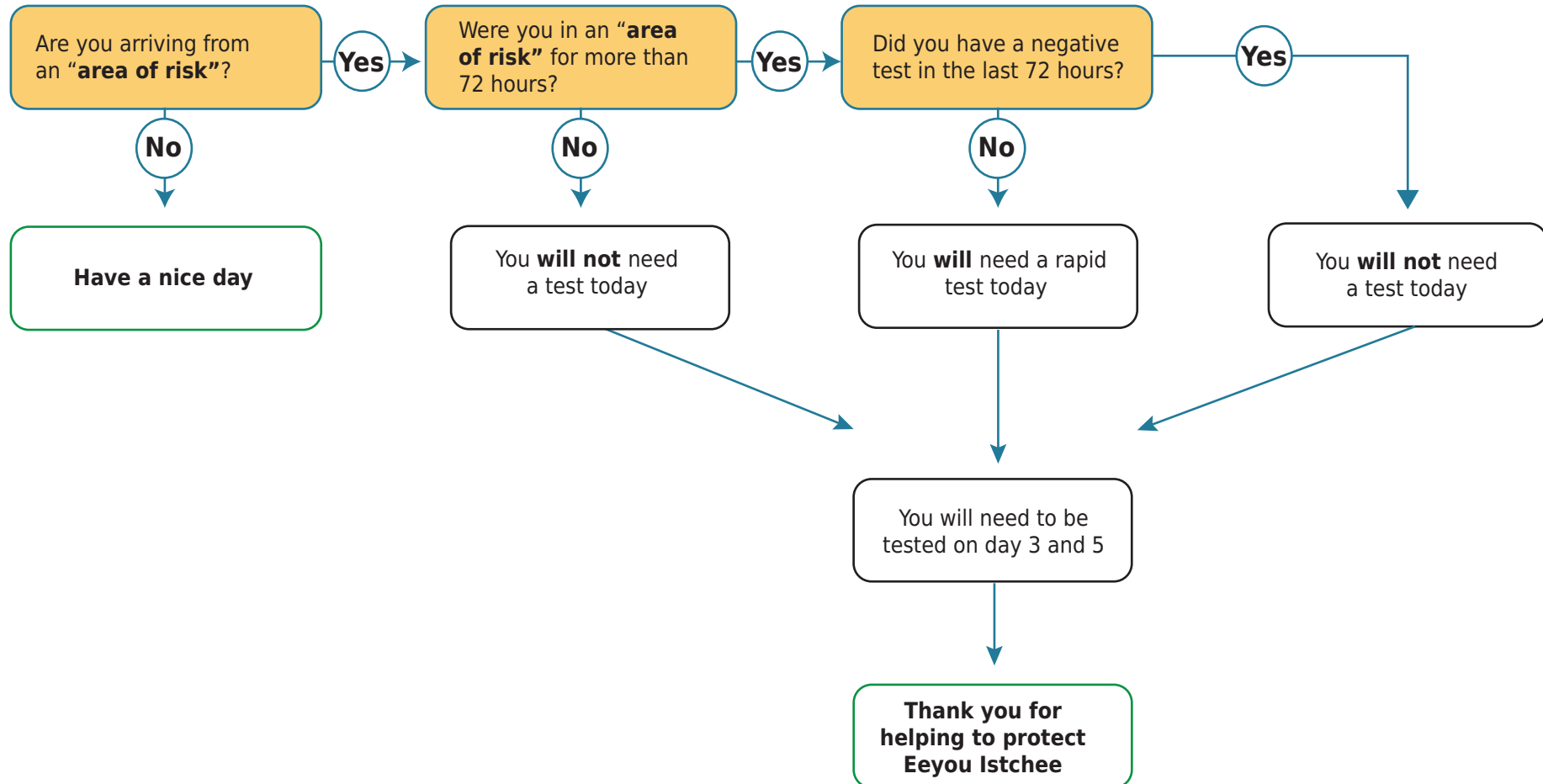
Individual may go outdoors but **not to enter indoor public places;**

Individuals **with the authorization of the employer may go to work** with mask and protective gear according to working conditions at all times when around others (i.e. clinic, construction site, office, etc.);

Going to school will be subject to the applicable Cree School Board protocols

Refrain from visiting in the homes of others

Do not attend indoor public or private gatherings



MEET

