

MESSAGE FROM LEADERSHIP

Public Safety and Health Care workers are continuing to work very hard so that we can continue deconfinement in Eeyou Istchee. Everyone can do their part by limiting contacts which will limit the spread of COVID-19 and allow contact tracing to be quickly done.

We need everyone's help to avoid the need for temporary restrictions, so it is very important that people limit contacts where they can. The habits of washing your hands frequently, keeping surfaces clean, and wearing a mask when distancing is not possible continue to be good measures to keep the spread of COVID-19 at a minimum.

Please consult your local bulletins as we transition between different steps of Deconfinement:

Currently: Step 1 of the Deconfinement Management Plan
March 11th, 2022: Step 2 of the Deconfinement Management Plan

Your community may have adopted different measures that will be important for you to respect.

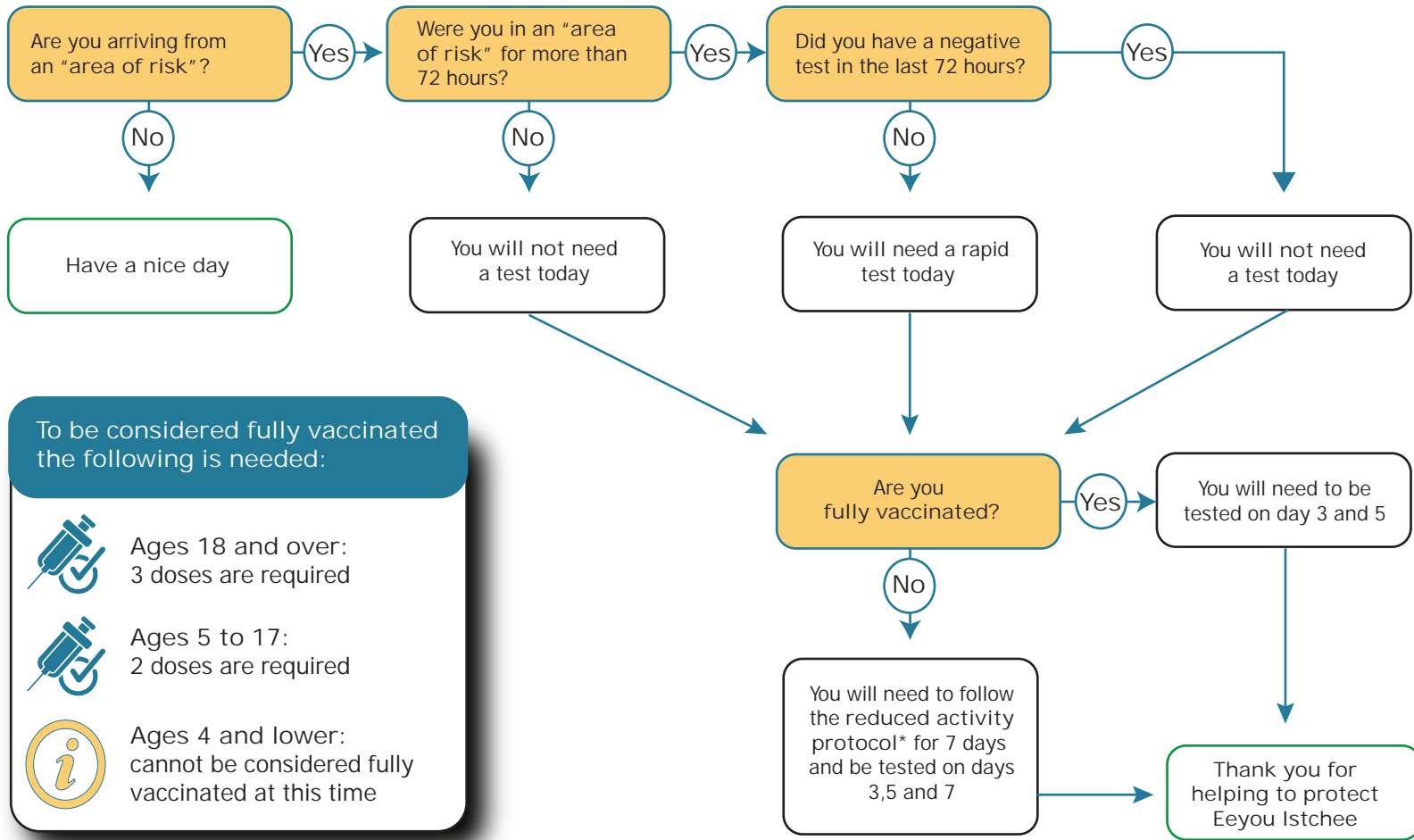
Vaccinations (first, second, and third dose) continue to be available at your local CMC by scheduling an appointment.

If you experience symptoms associated with COVID-19, please think of your fellow community members and refrain from going into public places, keep your distance from others and **contact your local testing facilities**.


STATUS OF CASES IN EYYOU ISTCHEE – as of March 7, 2022 3:00PM


PCR Test Results and Local Rapid Tests as confirmed by Public Health


Community	Total Cases	Active	Recovered	Community	Total Cases	Active	Recovered
Chisasibi	427	73	354	Waskaganish	459	117	341
Eastmain	84	1	82	Waswanipi	308	27	280
Mistissini	791	36	753	Wemindji	124	41	83
Nemaska	70	0	70	Whapmagoostui	18	1	17
Ouje-Bougoumou	217	20	195	TOTAL (in territory)	2498	316	2175



To be considered fully vaccinated the following is needed:

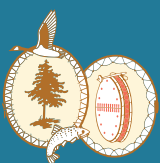
 Ages 18 and over:
3 doses are required

 Ages 5 to 17:
2 doses are required

 Ages 4 and lower:
cannot be considered fully vaccinated at this time

STEP 2

Reduced Activity Protocol



Individual may go outdoors but not to enter indoor public places;

Individuals with the authorization of the employer may go to work with mask and protective gear according to working conditions at all times when around others (i.e. clinic, construction site, office, etc.);

Going to school will be subject to the applicable Cree School Board protocols

Refrain from visiting in the homes of others

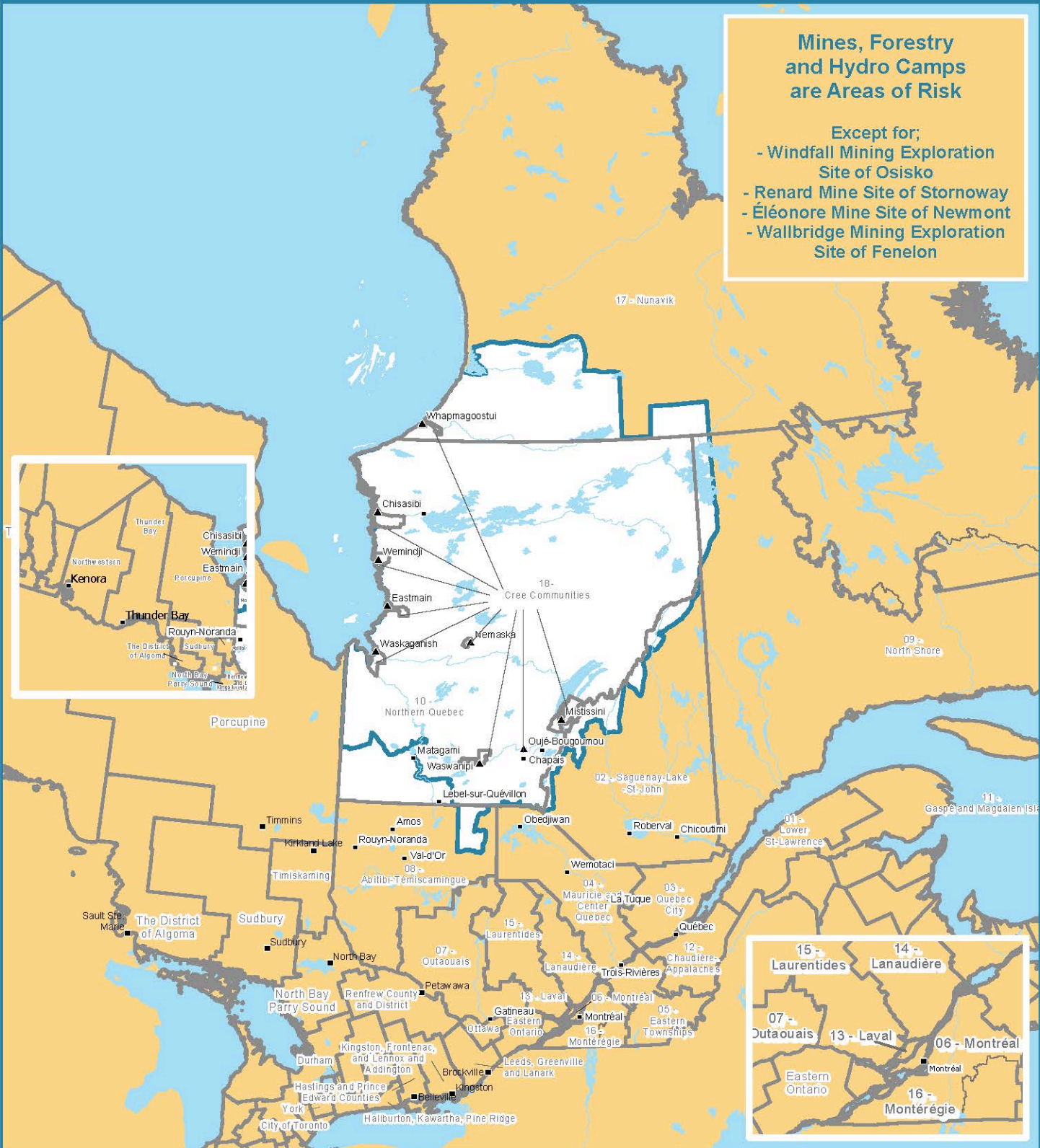
Do not attend indoor public or private gatherings

COVID-19 Areas of Risk

Effective as of Monday, February 7, 2022 at 11:59PM

Mines, Forestry and Hydro Camps are Areas of Risk

- Except for;
- Windfall Mining Exploration Site of Osisko
 - Renard Mine Site of Stornoway
 - Éléonore Mine Site of Newmont
 - Wallbridge Mining Exploration Site of Fenelon

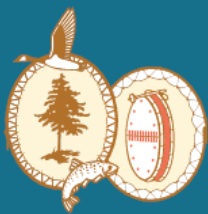


- ▲ Cree Community
- Town
- Eeyou Istchee
- Health Region
- Areas of Risk

Projection: UTM Zone 18 NAD 83
 Sources: CNG, Eeyou Istchee (2015), MERN BGDA 5M (2017), Statcan Health Region (2011)
 Document Name: EI_Covid19_AreasRisk_8x10
 Date: 2022-02-08

0 30 60 120 180 240 Kilometers





DECONFINEMENT IN EYYOU ISTCHEE

Phases of the Pandemic:

- <https://www.creehealth.org/news/four-phases-pandemic-plan-explained>

Information on Reduced Activity Protocol:

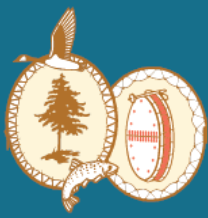
- <https://creehealth.org/covid/reduced-activity-protocol>

Phase 4
Indoor: No restrictions on number of households
Outdoor: No restrictions on number of households
Gatherings : Maximum 50 people indoor; Maximum 150 people outdoor
Education: Adapted protocols (mix of online and in person)
Travel: <ul style="list-style-type: none"> • No restrictions on travel except to areas of risk as per protocols
Work: <ul style="list-style-type: none"> • Childcare services to be provided for all workers requiring service

- Eastmain
- Nemaska
- Wemindji
- Whapmagoostui

Phase 3
Indoor: Maximum 3 households
Outdoor: Maximum 3 households
Gatherings: Maximum 25 people indoor; Maximum 75 people outdoor
Education: Adapted protocols (mix of online and in person)
Travel: <ul style="list-style-type: none"> • No restrictions on travel except to areas of risk as per protocols
Work: <ul style="list-style-type: none"> • Childcare services to be provided for all workers requiring service

- Chisasibi
- Mistissini
- Ouje-Bougoumou
- Waskaganish
- Waswanipi



EDUCATION

Cree School Board continues to collaborate with Public Health recommendations to ensure the safety of our students and staff.

The following are the types of instruction recommended for each community on the [week of March 7-11, 2022](#):

In-person Learning	Hybrid learning	Online learning
Whapmagoostui Wemindji Secondary Eastmain Waswanipi Oujé-Bougoumou Nemaska Msitissini	Waskaganish Chisasibi (March 9-10, 2022)	Chisasibi (March 8, 2022) Wemindji Elementary

Please note: School Calendars are still in effect.

Sabtuan Adult Education Services

Sabtuan Regional Vocational Training Centre including student residences and Mistissini Sabtuan Learning Centre have reopened. Vocational and General Education have resumed. General Education is instructing through a hybrid learning model. Waskaganish Training and Development Centre moved to online learning.

Post-Secondary Student Services

The PSSS staff are working at full capacity. Special COVID allowances were released to the students at the end of February.