

# CREE NATION COVID-19 Bulletin

March 22, 2022

## MESSAGE FROM LEADERSHIP

The staff of our schools are working very closely with Public Health to ensure a balance between the health and development needs for our children to be in school and the management of risk for the transmission of COVID-19. We recognize that there is much anxiety as we move through this transition period and it will take collaboration, patience and communication between everyone to get to our more normal life which is within our grasp.

We need everyone's help to avoid the need for temporary restrictions, so it is very important that people limit contacts where they can. The habits of washing your hands frequently, keeping surfaces clean, and wearing a mask when distancing is not possible continue to be good measures to keep the spread of COVID-19 at a minimum.

Please consult your local bulletins as we transition between different steps of Deconfinement:

**Currently:**  
**March 25<sup>th</sup>, 2022:**

**STEP 2** of the Deconfinement Management Plan  
**STEP 3** of the Deconfinement Management Plan

Your community may have adopted different measures that will be important for you to respect.

Vaccinations (first, second, and third dose) continue to be available at your local CMC by scheduling an appointment.

If you experience symptoms associated with COVID-19, please think of your fellow community members and refrain from going into public places, keep your distance from others and **contact your local testing facilities**.

## STATUS OF CASES IN EYYOU ISTCHEE – as of March 21, 2022 3:00PM

### PCR Test Results and Local Rapid Tests as confirmed by Public Health

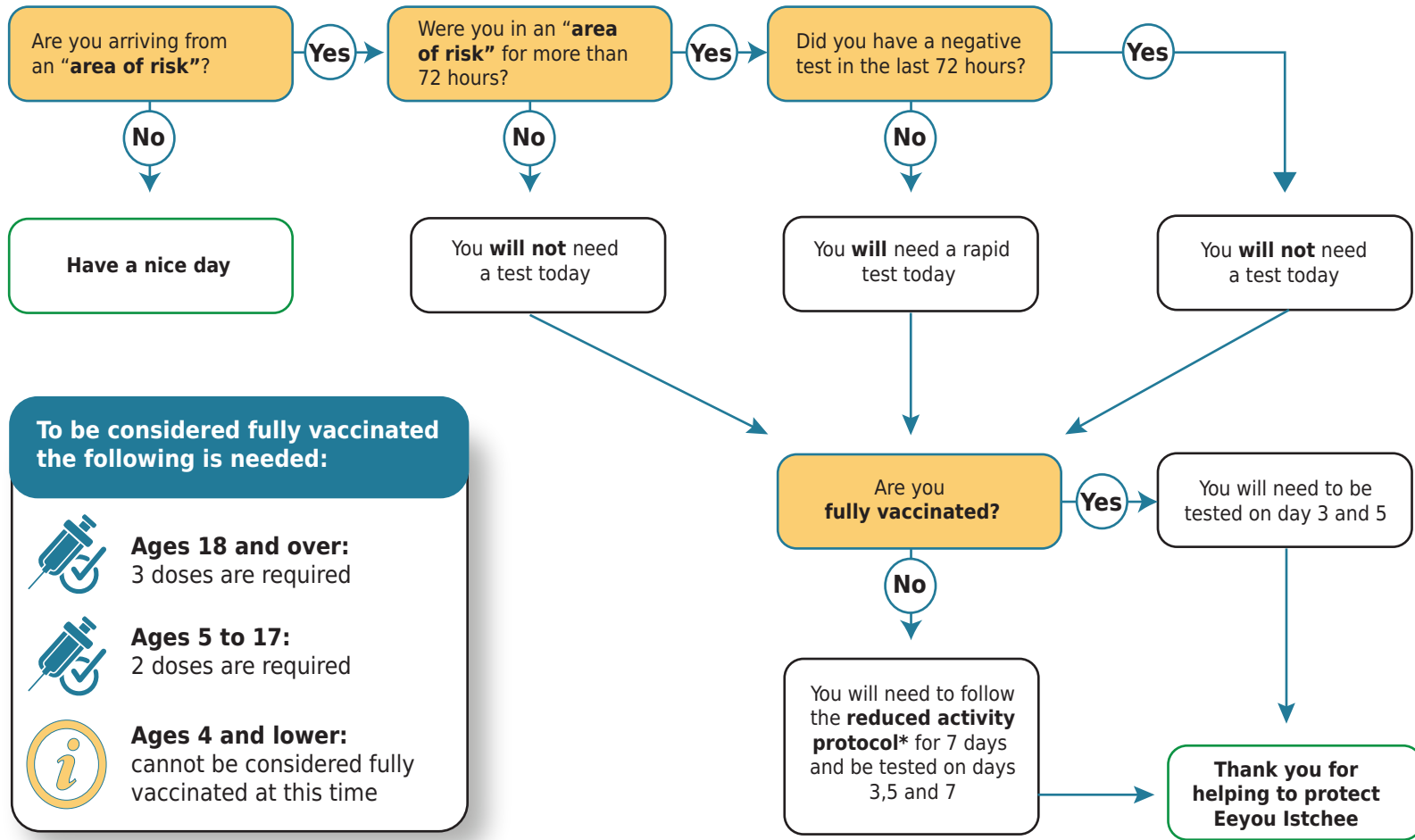
Community	Total Cases	Active	Recovered	Community	Total Cases	Active	Recovered
Chisasibi	617	74	543	Waskaganish	695	67	627
Eastmain	225	114	110	Waswanipi	328	7	320
Mistissini	832	13	817	Wemindji	181	28	153
Nemaska*	73*	2*	71*	Whapmagoostui	19	0	19
Ouje-Bougoumou	243	10	231	<b>TOTAL (in territory)</b>	<b>3213</b>	<b>315</b>	<b>2891</b>

*\*Note: figures for Nemaska are from March 20, 2022*

# Deconfinement Management Plan For Eeyou Istchee

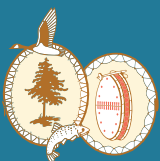
## DECONFINEMENT STEP 2

March 11, 2022 to March 24, 2022



## STEP 2

### Reduced Activity Protocol



Individual may go outdoors but **not to enter indoor public places;**

Individuals **with the authorization of the employer may go to work** with mask and protective gear according to working conditions at all times when around others (i.e. clinic, construction site, office, etc.);

Going to school will be subject to the applicable Cree School Board protocols

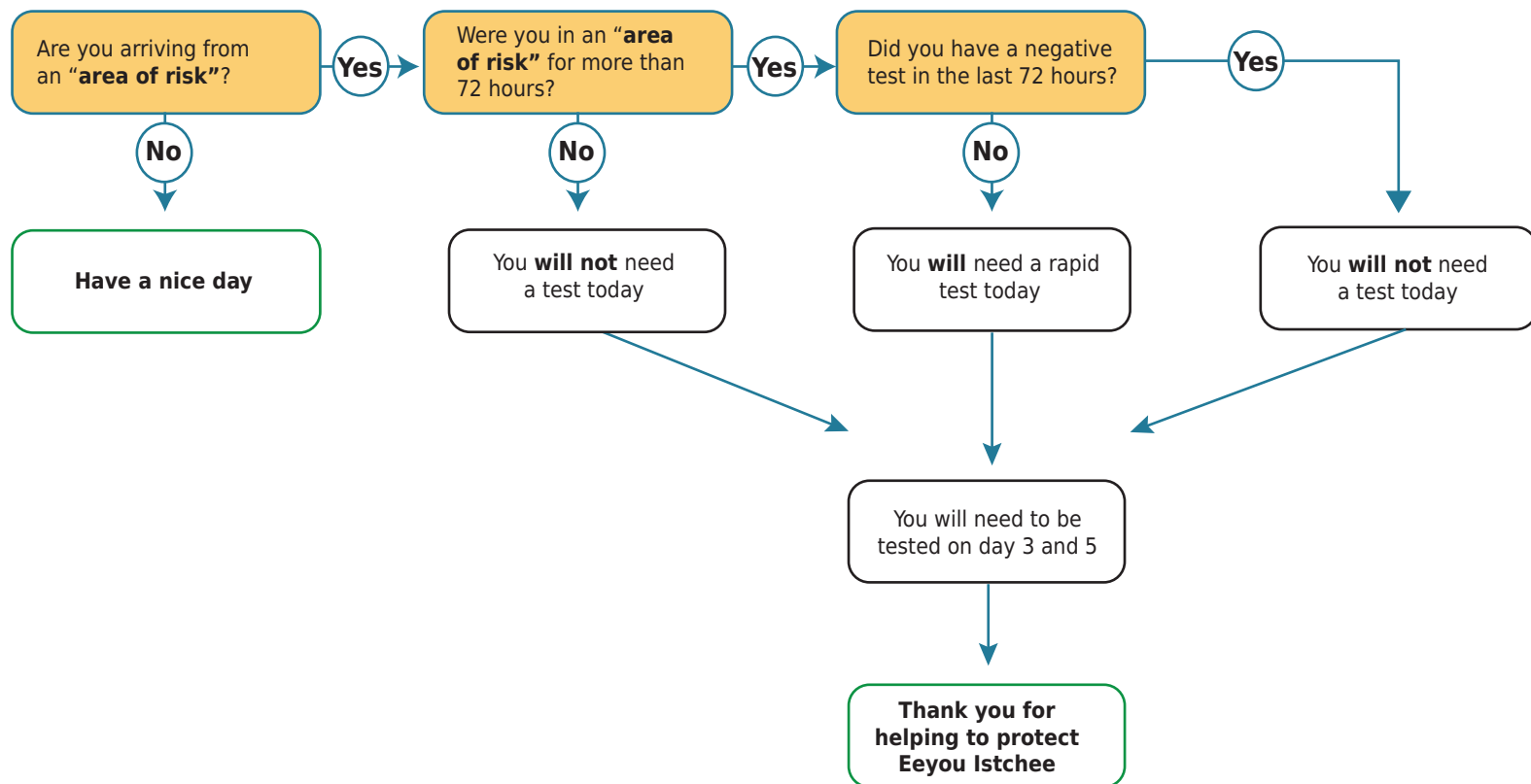
Refrain from visiting in the homes of others

Do not attend indoor public or private gatherings

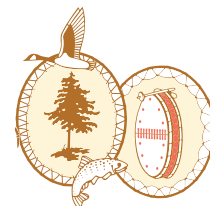
# Deconfinement Management Plan For Eeyou Istchee

## DECONFINEMENT STEP 3

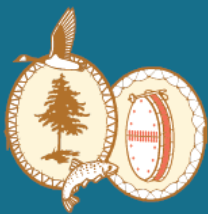
March 25, 2022



# STEP 3







# CREE NATION COVID-19 Bulletin

March 22, 2022

## DECONFINEMENT IN EYYOU ISTCHEE

### PHASE 4

- |   |   |
|---|---|
| <ul style="list-style-type: none"><li>• Chisasibi</li><li>• Eastmain</li><li>• Mistissini</li><li>• Nemaska</li></ul> | <ul style="list-style-type: none"><li>• Ouje-Bougoumou</li><li>• Waswanipi</li><li>• Wemindji</li><li>• Whapmagoostui</li></ul> |
|---|---|

Indoor: No restrictions on number of households

Outdoor: No restrictions on number of households

Gatherings : Maximum 50 people indoor; Maximum 150 people outdoor

Education: Adapted protocols (mix of online and in-person)

Travel:

- No restrictions on travel except to areas of risk as per protocols

Work:

- Childcare services to be provided for all workers requiring service

### PHASE 3

- Waskaganish

Indoor: Maximum 3 households

Outdoor: Maximum 3 households

Gatherings: Maximum 25 people indoor; Maximum 75 people outdoor

Education: Adapted protocols (mix of online and in-person)

Travel:

- No restrictions on travel except to areas of risk as per protocols

Work:

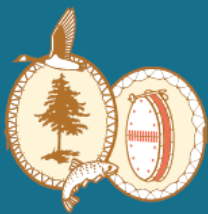
- Childcare services to be provided for all workers requiring service

Phases of the Pandemic:

- <https://www.creehealth.org/news/four-phases-pandemic-plan-explained>

Information on Reduced Activity Protocol:

- <https://creehealth.org/covid/reduced-activity-protocol>



# CREE NATION COVID-19 Bulletin

March 22, 2022

## EDUCATION

Cree School Board continues to collaborate with Public Health recommendations to ensure the safety of our students and staff.

### Youth Sector

Schools have aligned with their COVID-19 Procedure to the daycare protocols for pre-kindergarten students. The following are the type of instruction recommended for each community for the week of **March 21-25, 2022**:

In-Person Learning	
<ul style="list-style-type: none"><li>• Whapmagoostui</li><li>• Chisasibi</li><li>• Wemindji</li><li>• Waskaganish</li><li>• Eastmain starting on March 23, 2022</li></ul>	<ul style="list-style-type: none"><li>• Nemaska</li><li>• Waswanipi</li><li>• Oujé-Bougoumou</li><li>• Mistissini</li></ul>

### Sabtuan Adult Education Services

Vocational and General Education have resumed in-person instruction. Special COVID-19 allowances were released to the students in early March.

### Post-Secondary Student Services

The PSSS staff are working at full capacity in the offices. The Study Lounges and Areas have reopened for Post-Secondary Students in Montreal and Gatineau Offices since March 14, 2022.